

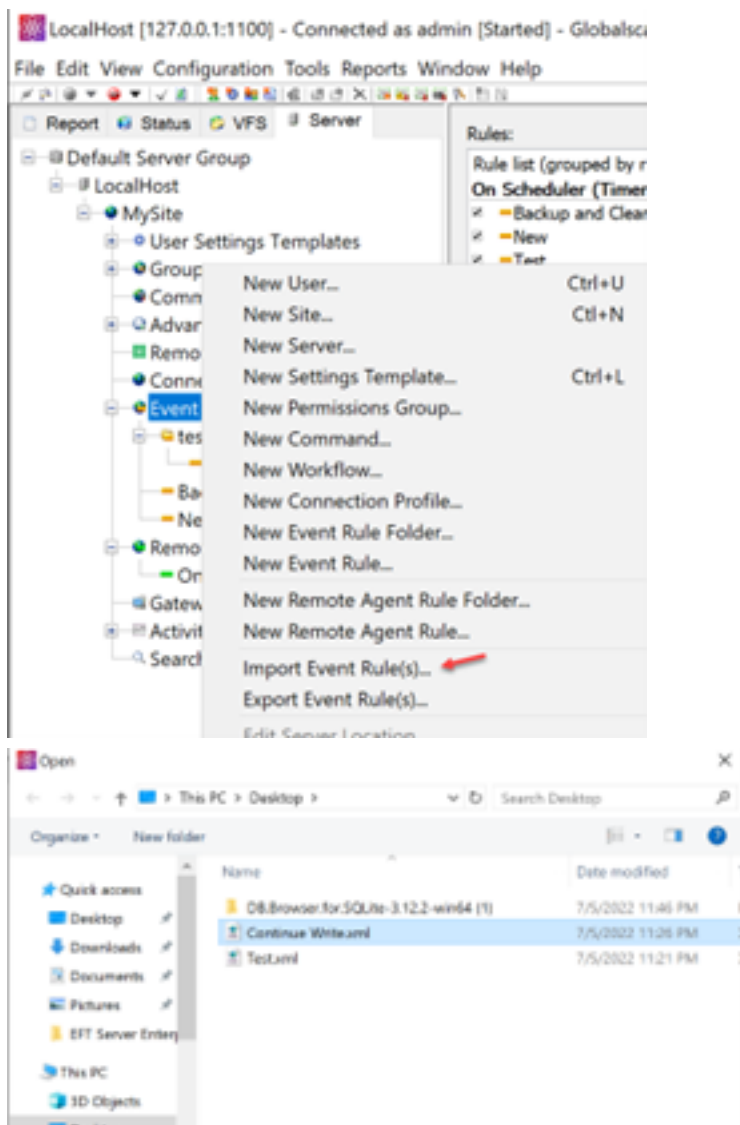
Event Rules are converted into Remote Event Rules after EFT restarts

## THE INFORMATION IN THIS ARTICLE APPLIES TO:

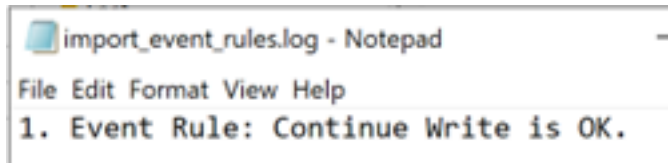
- EFT 7.4.7.1, EFT, v7.4.9, and EFT 7.4.11.34

## SYMPTOM

Between EFT 7.4.7.18 and 7.4.11.34, a bug was introduced in which manually imported event rules using the Import Event Rule option will be imported correctly in memory and displayed in the EFT Admin UI. However, the event rule is saved incorrectly in the configuration. The issue will be apparent and shown as soon as the EFT Service restarts, as the event rule will now be treated as a remote event rule. This issue will cause rules to be inoperable and not triggered nor trigger as remote event rules as there is no remote agent associated with them. This issue doesn't affect any event rules created manually from scratch. The bug was fixed in EFT 7.4.13.15 and higher. However, upgrading to a newer version will not fix the event rules already imported and saved incorrectly in the configuration. They will show up as remote event rules even after the upgrade.

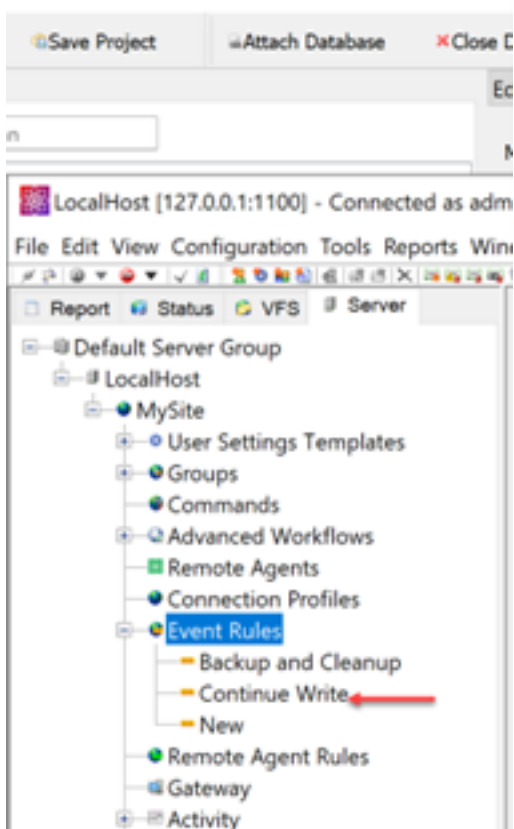


Event Rules are converted into Remote Event Rules after EFT restarts



This behavior can be verified by querying the **EventRules.db** using SQLite browser. The column **IsRemote** should be 0 for normal event rules and 1 for remote event rules, however, they are saved with a different random number.

	id	eventRuleID	siteID	backupNodeIndex	isRemote
	Filter	Filter	Filter	Filter	Filter
1	1	BLOB	1	-1	0
2	11	BLOB	1	-1	0
3	14	BLOB	1	-1	1
4	15	BLOB	1	-1	0
5	16	BLOB	1	-1	105

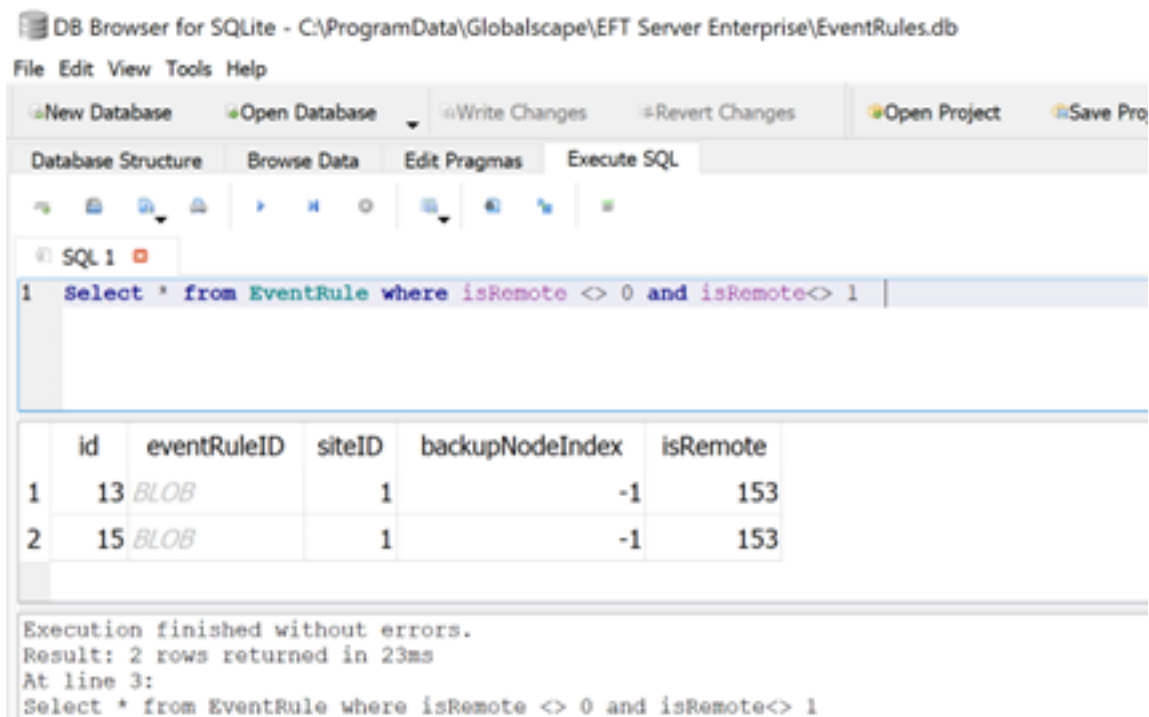


Event Rules are converted into Remote Event Rules after EFT restarts

## WORKAROUND

A simple workaround is to update the **IsRemote** column back to 0 for normal event rules that its value is different than 0 and 1 (random value). The following SQL Query can show the event rules affected after the restart.

```
Select * from EventRule where isRemote <> 0 and isRemote<> 1
```

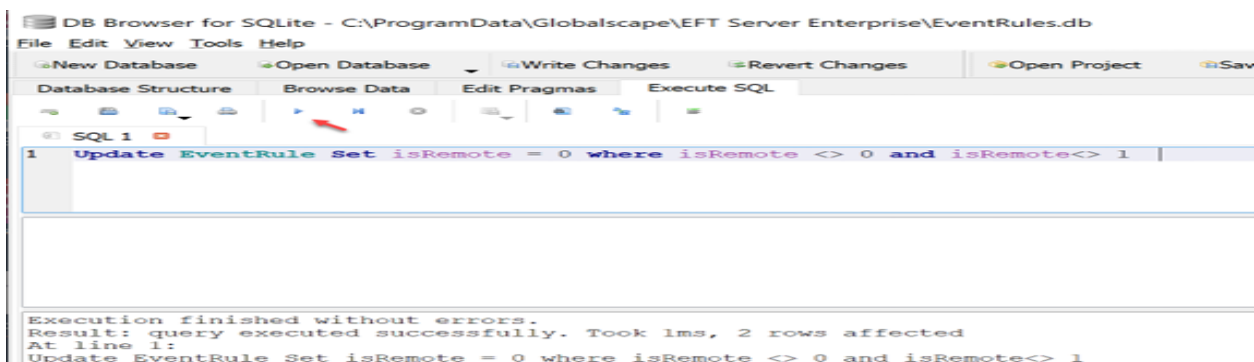


The screenshot shows the DB Browser for SQLite interface. The title bar indicates the database is 'C:\ProgramData\Globalscape\EFT Server Enterprise\EventRules.db'. The 'Execute SQL' tab is active, showing a query: 'Select \* from EventRule where isRemote <> 0 and isRemote<> 1'. Below the query, a table of results is displayed with 2 rows. The columns are 'id', 'eventRuleID', 'siteID', 'backupNodeIndex', and 'isRemote'. The first row has values 1, 13, BLOB, 1, -1, 153. The second row has values 2, 15, BLOB, 1, -1, 153. Below the table, a status message reads: 'Execution finished without errors. Result: 2 rows returned in 23ms At line 3: Select \* from EventRule where isRemote <> 0 and isRemote<> 1'.

	id	eventRuleID	siteID	backupNodeIndex	isRemote
1	13	BLOB	1	-1	153
2	15	BLOB	1	-1	153

You can update manually one by one using SQLite Browser UI or use the following SQL query to update all of them:

```
Update EventRule Set isRemote = 0 where isRemote <> 0 and isRemote<> 1
```



The screenshot shows the DB Browser for SQLite interface. The title bar indicates the database is 'C:\ProgramData\Globalscape\EFT Server Enterprise\EventRules.db'. The 'Execute SQL' tab is active, showing a query: 'Update EventRule Set isRemote = 0 where isRemote <> 0 and isRemote<> 1'. Below the query, a status message reads: 'Execution finished without errors. Result: query executed successfully. Took 1ms, 2 rows affected At line 1: Update EventRule Set isRemote = 0 where isRemote <> 0 and isRemote<> 1'.

## Event Rules are converted into Remote Event Rules after EFT restarts

Once the changes are done, make sure you commit your changes to the DB by clicking "Write Changes". Restart EFT and you should be able to see that the event rules won't be converted anymore.

DB Browser for SQLite - C:\ProgramData\Globalscape\EFT Server Enterprise\Event

File Edit View Tools Help

New Database Open Database Write Changes Revert Changes

Database Structure Browse Data Edit Pragmas Execute SQL

Table: EventRule

	id	eventRuleID	siteID	backupNodeIndex	isRemote
	Filter	Filter	Filter	Filter	Filter
1	1	BLOB	1	-1	0
2	11	BLOB	1	-1	0
3	13	BLOB	1	-1	0
4	14	BLOB	1	-1	1
5	15	BLOB	1	-1	0

GlobalSCAPE Knowledge Base

<https://kb.globalscape.com/Knowledgebase/11567/Event-Rules-are-converted-in...>