

Known AWE issues after upgrading to EFT v7.4.7 from earlier versions of EFT

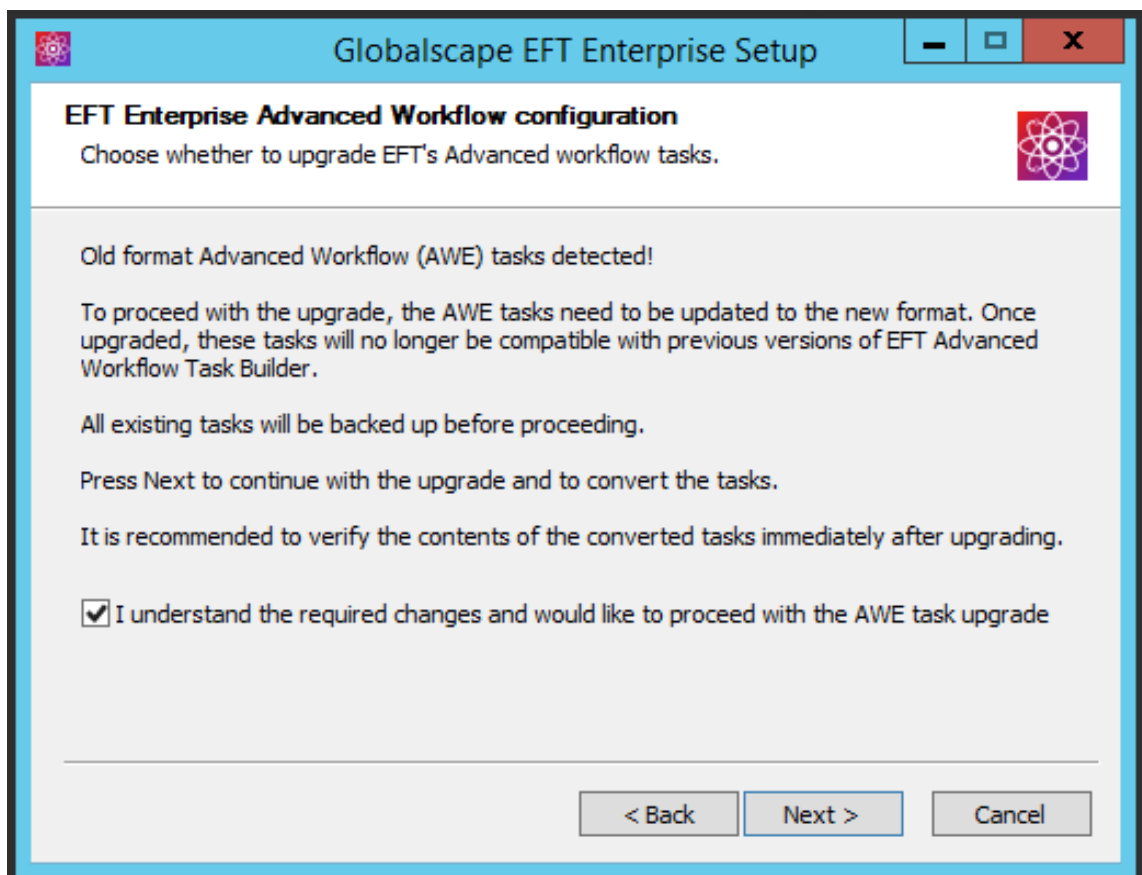
## THE INFORMATION IN THIS ARTICLE APPLIES TO:

- EFT v7.4.7 and later

## DISCUSSION

In EFT v7.4.7, the Advanced Workflow Engine was upgraded from v8 to v10.7.100.4. Because of big changes between versions, several upgrade issues may be encountered when upgrading EFT from v7.4.5 to any later version. Each of the known issues is described below.

- When you [upgrade from an earlier EFT version to version 7.4.7 or later](#), a message will appear stating that "Old format Advanced Workflow (AWE) tasks detected!" The old tasks will be backed up and then converted to the new format. The converted task will not be compatible with older EFT versions. Select the "I understand..." check box, then click **Next** to proceed. In [Silent](#) installations or after importing older versions of AWE tasks, the AWE task will not be updated until you open it in the Task Builder.



Known AWE issues after upgrading to EFT v7.4.7 from earlier versions of EFT

## 372420 - Send email action fails when used with On Error after upgrading from Automate 8 to Automate 10

(Related to 366436 - AWE "On Error" action email failures after upgrading EFT)

Email notifications won't be sent when an action fails and the **Send email** action is used within the "On Error" tab in AWE 10.

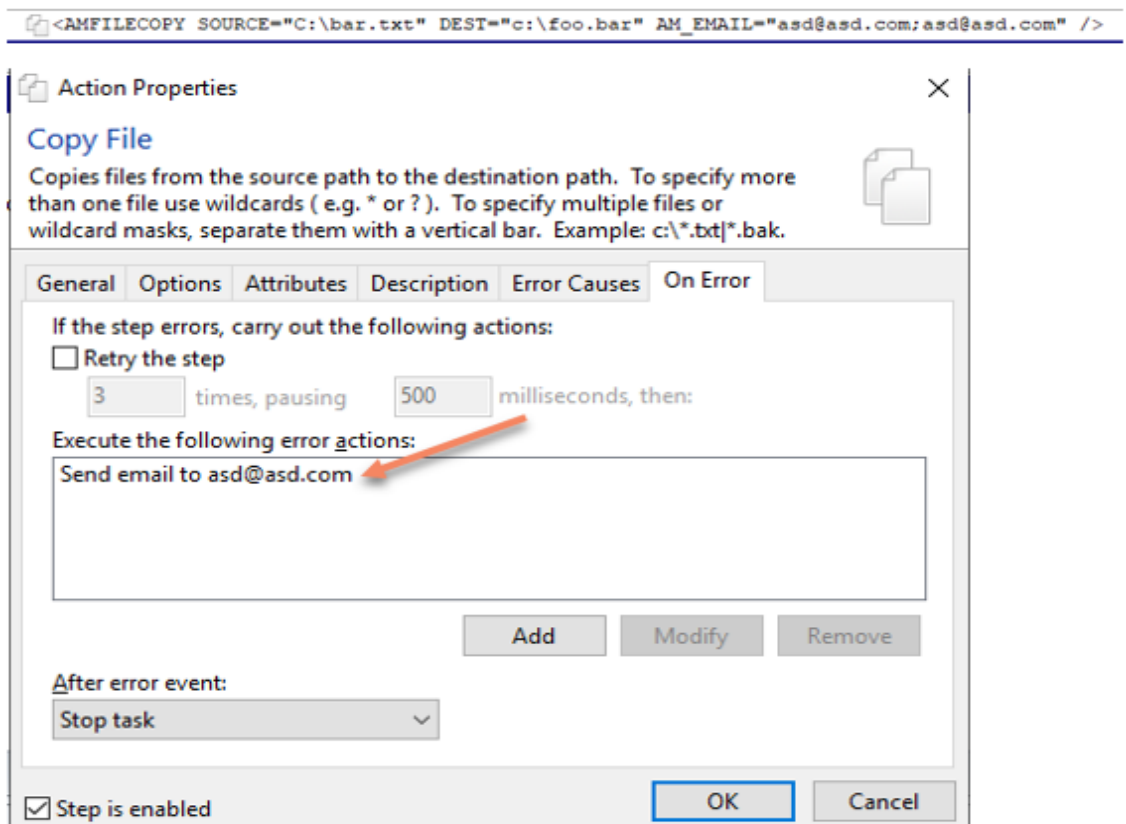
**Severity:** Medium

**Resolution:** The issue has been fixed in AWE Hotfix 10.7.100.9/ EFT v7.4.9.11.

### Workarounds

Upgrade to EFT v7.4.9.11 or later, or do one of the following:

- Remove the "Send email" action from "On Error" tab in AWE



Known AWE issues after upgrading to EFT v7.4.7 from earlier versions of EFT

- Add an EFT "Send Email" Action in the Event Rule and continue with next step

Copy file(s) from "C:\bar.txt" to "c:\foo.bar". If the step causes an error, continue the task.  
If last step failed then...  
Send e-mail message "" to "asd@asd.com"  
End If

Action Properties

### Copy File

Copies files from the source path to the destination path. To specify more than one file use wildcards ( e.g. \* or ? ). To specify multiple files or wildcard masks, separate them with a vertical bar. Example: c:\\*.txt|.bak.

General Options Attributes Description Error Causes On Error

If the step errors, carry out the following actions:  
 Retry the step  
3 times, pausing 500 milliseconds, then:  
Execute the following error actions:  
Add Modify Remove

After error event:  
Continue to next step

Step is enabled OK Cancel

Copy file(s) from "C:\bar.txt" to "c:\foo.bar". If the step causes an error, goto label ERROR\_HANDLE.  
ERROR\_HANDLE:  
Send e-mail message "asd" to "asd@asd.com"  
Action Properties

### Copy File

Copies files from the source path to the destination path. To specify more than one file use wildcards ( e.g. \* or ? ). To specify multiple files or wildcard masks, separate them with a vertical bar. Example: c:\\*.txt|.bak.

General Options Attributes Description Error Causes On Error

If the step errors, carry out the following actions:  
 Retry the step  
3 times, pausing 500 milliseconds, then:  
Execute the following error actions:  
Add Modify Remove

After error event:  
Goto label  
Label: ERROR\_HANDLE

Step is enabled OK Cancel

Known AWE issues after upgrading to EFT v7.4.7 from earlier versions of EFT

## 372430 - Change Folder is appending to Home Folder path (SFTP Only)

The FTP change folder action for SFTP connections will append the user's home folder to user's landing path.

**Severity:** Medium

**Resolution:** The issue has been fixed in AWE Hotfix 10.7.100.9/ EFT v7.4.9.11.

**Workaround:** Upgrade to EFT v7.4.9.11 or later

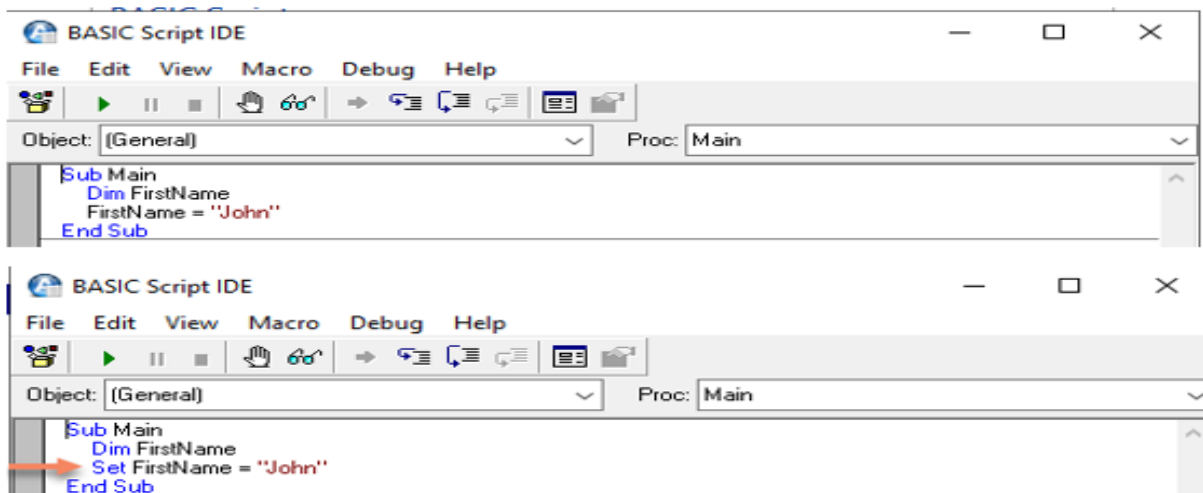
## 372415 - BASIC Action requires "Set" keyword

AWE 10 now requires the use of the "Set" keyword to assigning values to object properties. Not using the "Set" keyword will cause the AWE 10 engine to throw an error and halt the execution.

**Severity:** High

**Resolution:** This is not an issue but rather a new behavior of AWE 10.

**Workaround:** Refactor existing code by appending the keyword "Set" when assigning a value to a variable or object property for any BASIC script actions.



Known AWE issues after upgrading to EFT v7.4.7 from earlier versions of EFT

### 372410 - Remove characters is now case-sensitive

Removing characters in AWE10 is now case-sensitive instead of case-insensitive as it was in AWE 8

**Severity:** Low

**Resolution:** This is not an issue but rather a new behavior of AWE 10.

**Workaround:**

This code will not replace "j" on AWE 10.

- Create a variable named "result".
- Create a variable named "FirstName" with an initial value of "jon Doe".
- Remove characters "J" from the beginning and end of the text "%FirstName%". Return the result in the variable "result".

variables			
Name	Type	Initial Value	Current Value
result	Variable		on Doe
FirstName	Variable		jon Doe

Add a second Remove character action using the upper/lower case option to avoid case-sensitive issues.

- Create a variable named "result".
- Create a variable named "FirstName" with an initial value of "jon Doe".
- Remove characters "J" from the beginning and end of the text "%FirstName%". Return the result in the variable "result".
- Remove characters "j" from the beginning and end of the text "%FirstName%". Return the result in the variable "result".

Name	Type	Initial Value	Current Value
FirstName	Variable	jon Doe	jon Doe
result	Variable		on Doe

### 370542 - SITE\_STATUS is now read-only and can't be modified

Known AWE issues after upgrading to EFT v7.4.7 from earlier versions of EFT

AWE10 does not allow to modify existing site variable SITE\_STATUS as now this parameter is marked as read only.

**Severity:** Low

**Resolution:** This is not an issue but rather a new behavior of AWE 10.

**Workaround:**

The following code will throw an error on line 2:

```
1 Create a variable named "myvariable".
2 Set variable SITE_STATUS to value "ONLINE"if the step causes an error, retry 3 times, pausing 500ms between attempts.
3 Copy file(s) from "a" to "a".
```

Change the variable name to a different variable:

```
5 Create a variable named "myvariable".
6 Set variable myvariable to value "ONLINE"if the step causes an error, retry 3 times, pausing 500ms between attempts.
7 Copy file(s) from "a" to "a".
```

## 369290 - AWE task failing with "Task Failure" despite the step succeed on the first retry

AWE10 will fail a task when the task as error even if the task succeeds in the 1st retry.

**Severity:** High

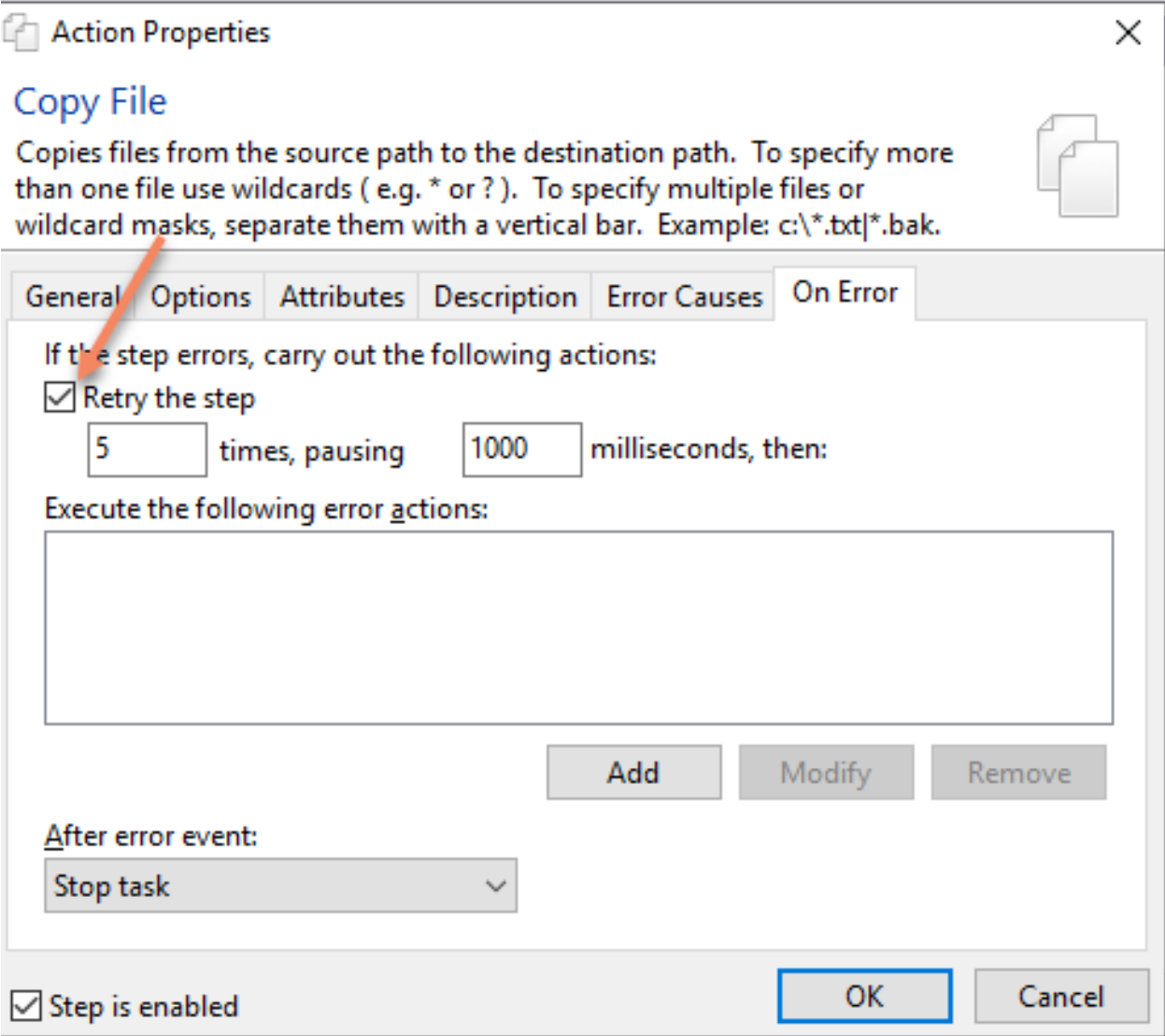
**Resolution:**

There is currently no fix for this issue. The Globalscape tech support team is working on a solution to include in a future update.

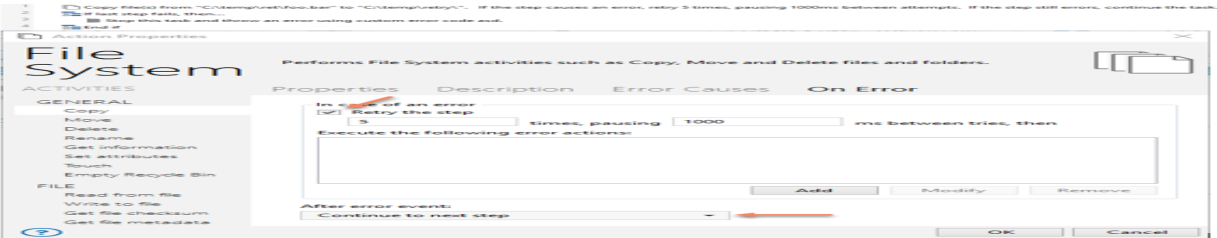
**Workaround:**

Known AWE issues after upgrading to EFT v7.4.7 from earlier versions of EFT

Using Retry option as error handling under "On Error" may cause issues and halt AWE execution causing false positives.



Set "On Error Continue to Next step" and add "If last step fails" action then stop Task with Error



Known AWE issues after upgrading to EFT v7.4.7 from earlier versions of EFT

**Note:** This issue only affects the error handling of the action; however, the state of the last step is not affected by this issue. By ignoring the error whether such errors were from the retry or truly errors, the if last step condition will handle the continuation or throw an error when all retries are used from the action.

## 372421 - AWE 10 uses GoTo Label different than AWE 8

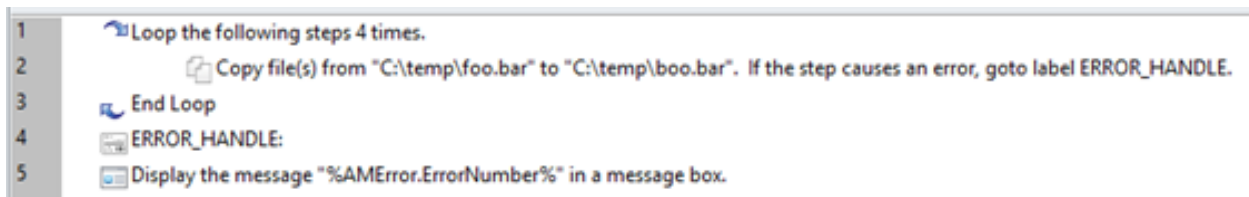
AWE 10 behaves differently than AWE 8 when using Goto Label actions. When an error occurs the engine will step into the label action and execute it ( label action is now considered as a step) then it steps into the next step as opposed to AWE 8 where the engine steps into the first step under the Goto label action. This could affect with the AMError object as stepping into the Label it will reset the value of the last step and AMError object.

**Severity:** High

**Resolution:** This is not an issue but rather a new behavior of AWE 10.

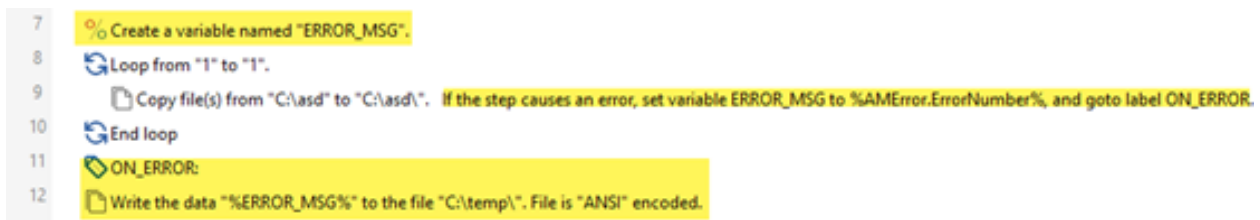
**Workaround:**

The following code shows how AWE 8 was executing:



```
1 Loop the following steps 4 times.
2   Copy file(s) from "C:\temp\foo.bar" to "C:\temp\boo.bar". If the step causes an error, goto label ERROR_HANDLE.
3 End Loop
4 ERROR_HANDLE:
5   Display the message "%AMError.ErrorNumber%" in a message box.
```

Use "Set Variable" action with a user-defined variable and assign the value of the AMError.\* to it, then use the user-defined variable on subsequent actions.



```
7 % Create a variable named "ERROR_MSG".
8 Loop from "1" to "1".
9   Copy file(s) from "C:\asd" to "C:\asd". If the step causes an error, set variable ERROR_MSG to %AMError.ErrorNumber%, and goto label ON_ERROR.
10 End loop
11 ON_ERROR:
12   Write the data "%ERROR_MSG%" to the file "C:\temp\". File is "ANSI" encoded.
```



Known AWE issues after upgrading to EFT v7.4.7 from earlier versions of EFT

## 372799 - AWE10 uses different date format than AWE 8 Risk

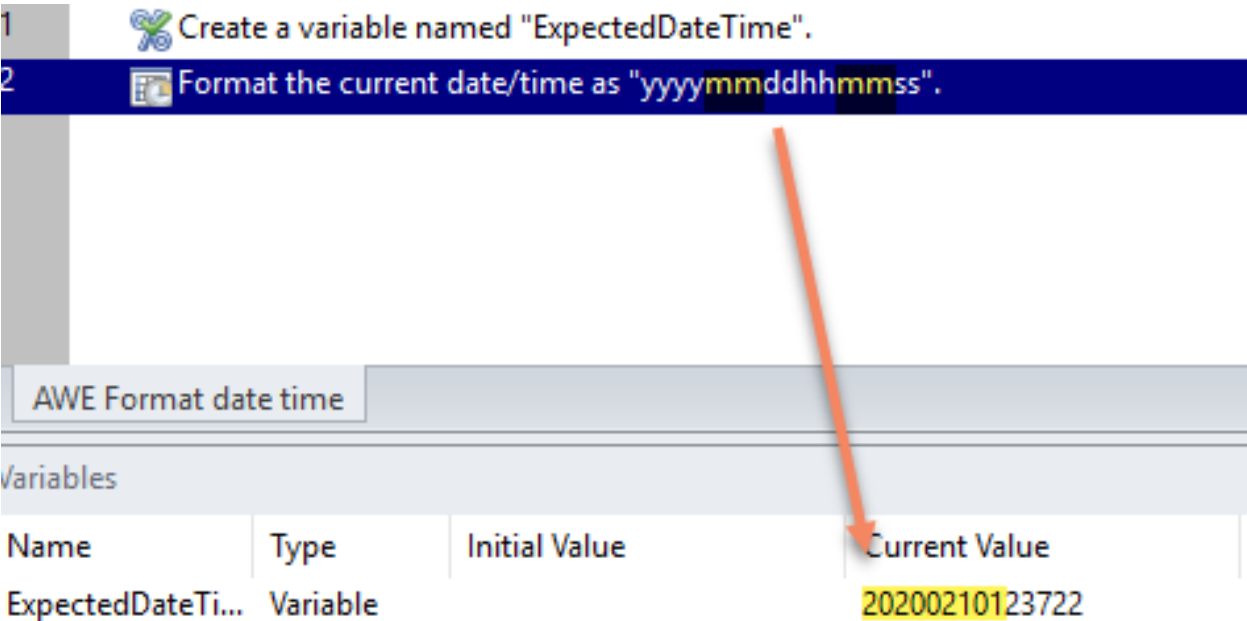
AWE10 uses different date format than AWE 8 and it could cause to report incorrect values.

**Severity:** Medium

**Resolution:** This is not an issue but rather a new behavior of AWE 10.

**Workaround:**

This is how AWE 8 reports the date/time format:



1 Create a variable named "ExpectedDateTime".

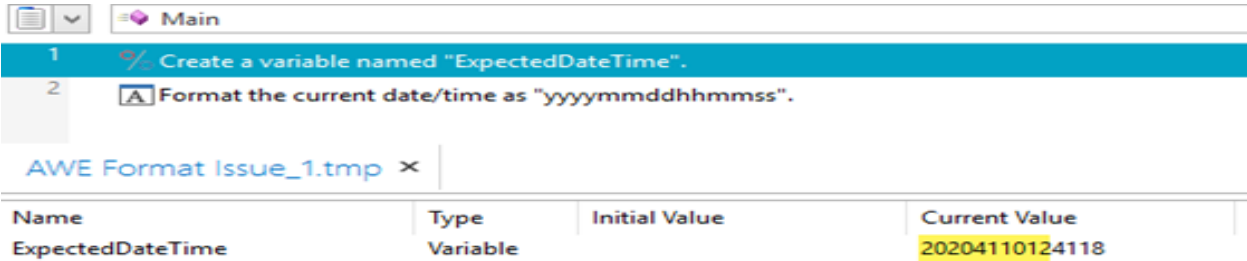
2 Format the current date/time as "yyyymmddhhmmss".

AWE Format date time

variables			
Name	Type	Initial Value	Current Value
ExpectedDateTi...	Variable		20200210123722

An orange arrow points from the 'mm' in the format string to the '02' in the current value.

After you upgrade to AWE10, you will need use the new format for the Format date time action, hh should be changed to use capital H and mm should be changed to M:



Main

1 Create a variable named "ExpectedDateTime".

2 Format the current date/time as "yyyymmddHhMmss".

AWE Format Issue\_1.tmp x

Name	Type	Initial Value	Current Value
ExpectedDateTime	Variable		20204110124118

The format string in AWE 10 uses 'H' for hours and 'M' for minutes, which is reflected in the current value.

Known AWE issues after upgrading to EFT v7.4.7 from earlier versions of EFT

## 372669 - Trying to use the Getfiles action for SharePoint and getting errors

Error when attempting to use the GetFiles action to a SharePoint location.

Customer is receiving an error when attempting to use the GETFiles action to a Sharepoint location.

The error is as follows: Sharepoint failed Error:Virus status already exist

**Severity:** High

**Resolution:** There is currently no fix for this issue. The Globalscape tech support team is working on a solution to include in a future update

**Workaround:** There is currently no workaround for this issue.

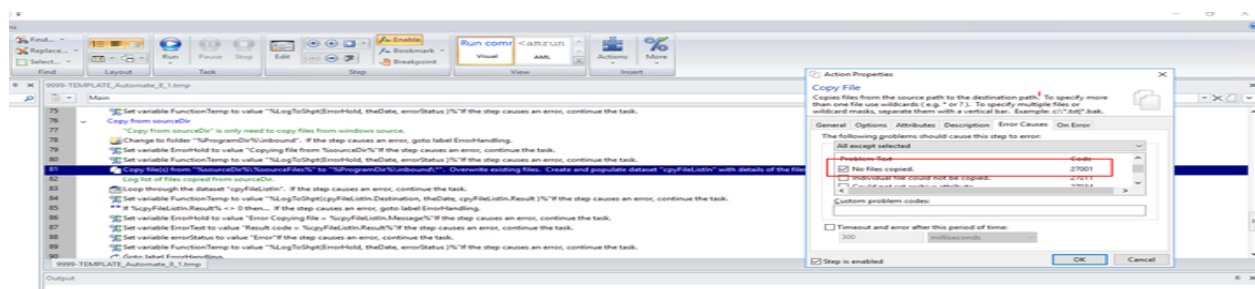
## 372815 – “On Error Codes” are different from AWE 8 to AWE 10

If custom error codes are used in error handling, AWE logic to might behave differently than AWE 8.

**Severity:** Medium

**Resolution:** This is not an issue but rather a new behavior of AWE 10.

**Workaround:** Review and refactor code for error handling logic (if any) will need to use appropriated error codes



## Known AWE issues after upgrading to EFT v7.4.7 from earlier versions of EFT



GlobalSCAPE Knowledge Base

<https://kb.globalscape.com/Knowledgebase/11506/Known-AWE-issues-after-upgra...>