

What is stored in the EFT configuration directory?

THE INFORMATION IN THIS ARTICLE APPLIES TO:

- EFT v7 - 7.4.x

QUESTION

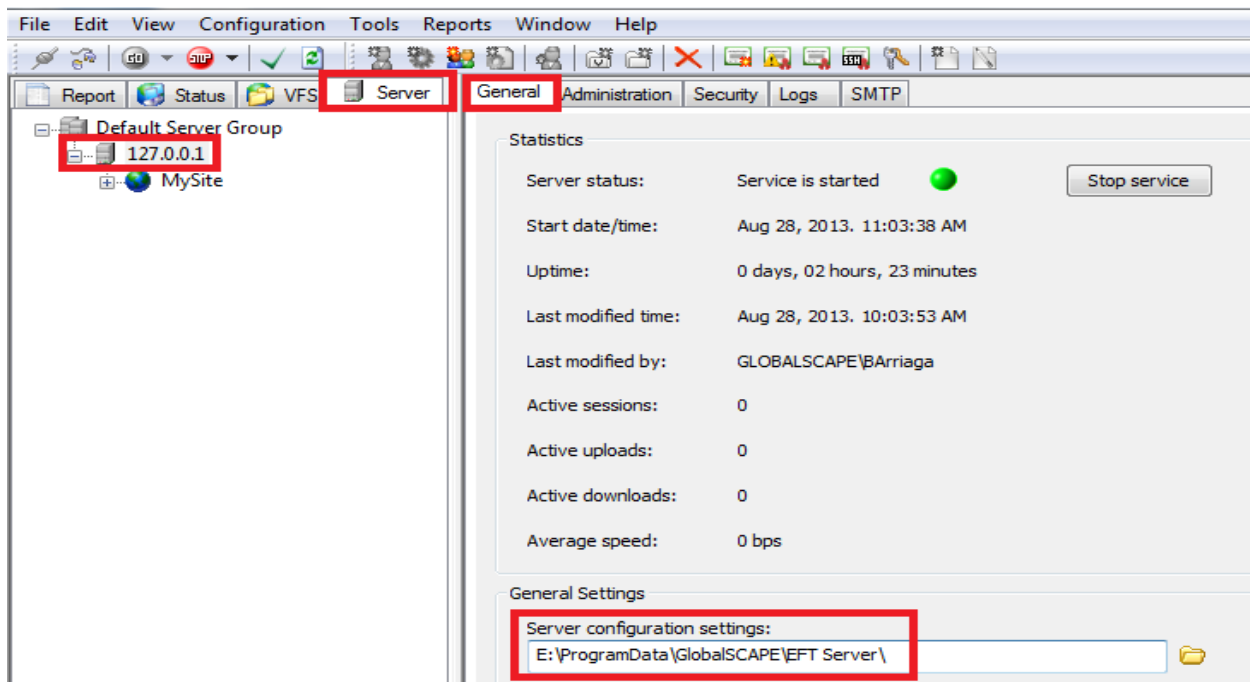
What is stored in the EFT configuration directory?

ANSWER

The configuration directory for EFT is used to store parameters and settings for running EFT. The EFT server service reads the configuration file when the service starts. The configuration directory, by default is **C:\ProgramData\GlobalSCAPE\EFT Server**. (Remember, the **ProgramData** file is hidden by default, so you have to enable **View > Hidden Items** in Windows Explorer to make it visible.)

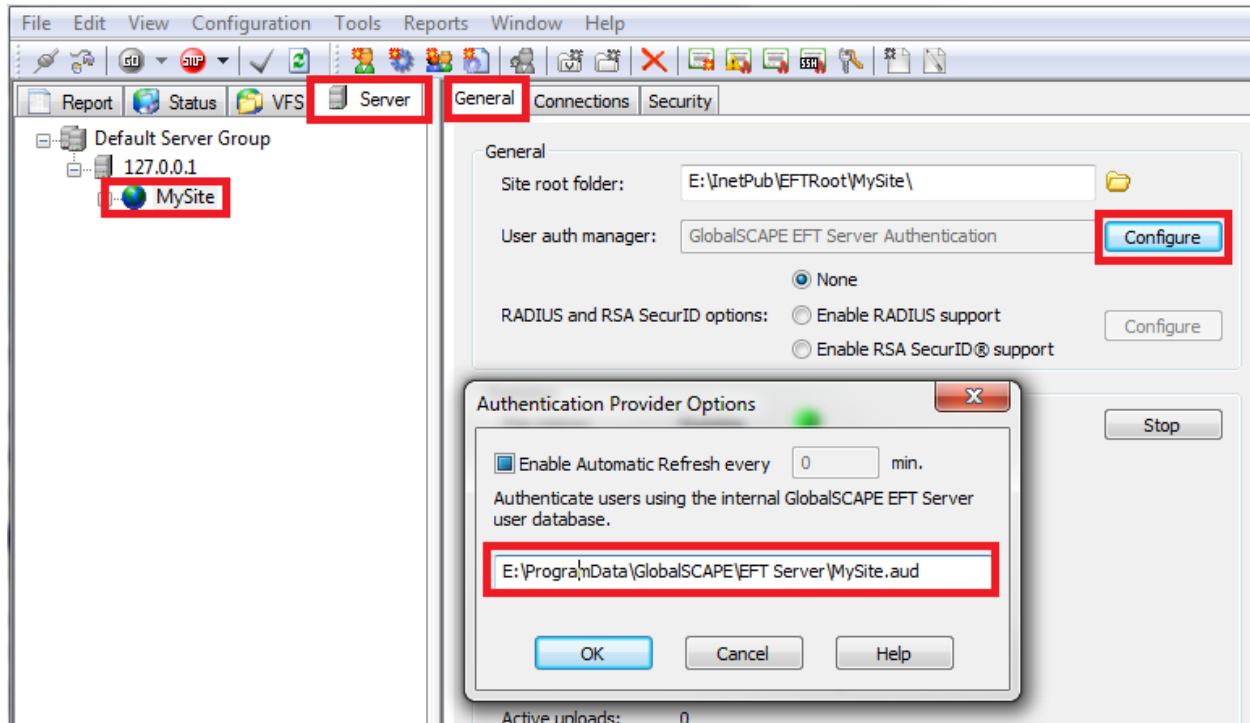
If EFT was not installed in the default installation directory, then you can find the path in the administration interface or the registry:

In the EFT administration interface, in the left pane, click the **Server tab > Server** node, then in the right pane, click the **General** tab. In the **General Settings** area, the path is displayed in **Server configuration settings**.

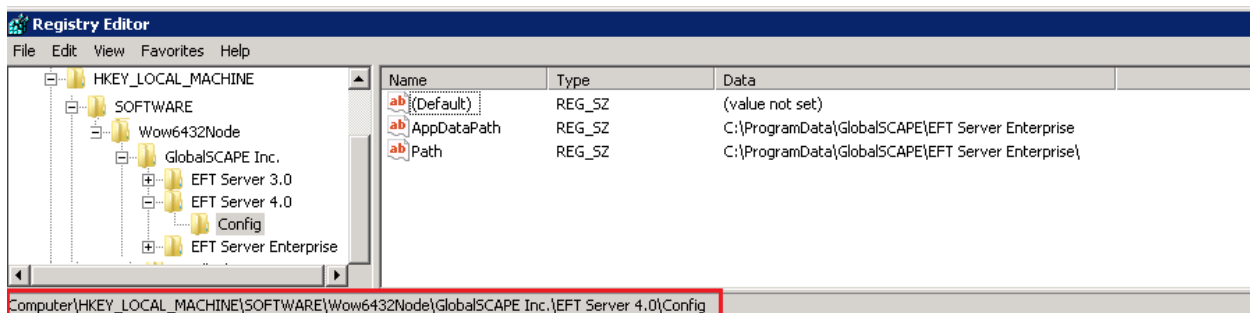


What is stored in the EFT configuration directory?

The **Authentication Provider** path can be found by clicking the **Server tab > Server** node, then in the right pane, click the **General** tab. Next to **User auth manager**, click **Configure**. The **Authentication Provider Options** dialog box appears and displays the path to the user database.



In the registry, you can see the path to the Config location by expanding **HKEY_LOCAL_MACHINE > Software > Wow6432Node > GlobalCAPE, Inc. > EFT Sever 4.0 > Config**.



The following files are stored in the configuration directory:

What is stored in the EFT configuration directory?

- **FTP.cfg** - This file is the main configuration file for EFT. It is an encrypted file that stores the EFT admin username/passwords, Admin socket listener IP/port, ARM database settings, Site names, Site root folder path assignment, Site IP/port assignments, SSL cert/key assignment and location, SFTP key assignment and location, SFTP/SSL key manager (imported keys/certs), IP access/ban list entries, user settings template assignments, user home folder assignments, misc user info (e-mail, full name, description, etc), virtual folder paths, permissions, group assignments, custom commands, Event Rules, AWE task references, and DMZ Gateway configurations. Some of this information has been shifted to the *.db files in 7.3.3.21 and later.
- **Ftp.bak** - Automatic backup of the FTP.cfg file.
- ***.aud** - Prior to 7.3.3.21, usernames and passwords were stored in this file for Globalscape Authenticated sites. Generally these are stored in the configuration directory, however the path can be changed in the configuration settings for your Globalscape authenticated site.
- ***.clients.db** - For 7.3.3.21 and later, usernames and passwords are stored in these database files. These files have a GUID that is associated with a particular site. It is only possible to retrieve this GUID with the COM API. This also contains information on Settings Templates, Site level AS2 settings, and Group settings.
- **EventRules.db** - Contains information on the Event Rules that are configured on all Sites.
- **MetaData.db** - Stores comments on files in the Web Transfer Client. May be used for more information in later versions.
- **NotificationsDigest.db** - Stores information on file uploads for later notification.
- **SiteSettings.db** - Stores information on Accelerate and SAML settings. May be used for more information in later versions.
- **Workspaces.db** - Stores information on Workspaces such as invitations, files uploaded, per site Workspace settings, and Workspace-specific settings.
- **EFT.log** - This file logs information about what is occurring with EFT. It can be configured with the logging.cfg file, which is also in the configuration directory. The location of this log can be changed with logging.cfg, although this is unlikely.
- **Logging.cfg** - Changes the behavior of EFT.log, by default it will capture all INFO logging on the server. It includes comments that detail how to change the logging functionality.
- **Dictionary.txt** - A dictionary file used to defend against dictionary attacks with the High Security Module.
- **CredentialsEmail.tpl** - A template file used to send credentials to users when their accounts are made or their password is changed by an administrator.
- **PasswordResetConfirm.html** - A template used when a password reset is requested from the Web Transfer Client login page.
- **UsernameResend.txt** - Message sent out by the "forgot username" box on the Web

What is stored in the EFT configuration directory?

Transfer Client login page.

- **PasswordResetMsg.html** – A message sent to a user when their password expires.
- **PasswordResetReminderMsg.html** – A message sent to a user when their password reminder period has passed and their password is nearly expired.
- **WorkspaceNotification.txt** – Sends a notification to the Workspace owner when an action is taken within the Workspace.
- **WorkspacesAdminAddedParticipantMsg.html** – When an internal user is added to a Workspace, this message is sent to notify them that they have been added.
- **WorkspacesInviteRegisterMsg.html** – When an external user is added to a Workspace, this is the message that is sent to allow them to register an account in EFT.
- **WorkspacesInviteVerifyMsg.html** – This message is sent after an external user registers an account, asking them to verify before they log in and view the shared folder.
- **WorkspacesOAIEmail.html / WorkspacesOAIEmail.txt** – This message is sent to a user when the Workspaces send functionality is used to send them a file.
- **Pubring.pgp** – Stores the public keys for PGP keys on your keyring.
- **Secring.pgp** – Stores the private keys for PGP keys on your keyring.
- **/HTTPMessages** – Allows for customization of HTTP error messages emitted by the Web Transfer Client.
- **/Logs** – By default, stores the client-side activity logs that are created by event rules, the server side activity logs that are generated when users access EFT via any protocol, and the TED6 logs, which show more detailed information for client-side activity. Only failures are stored for TED6 logs unless a registry edit is made.
- **/Oracle** – Contains files for creating, upgrading, modifying the database to use an ODBC data source for authentication, and purging Oracle databases for use with the Auditing and Reporting module.
- **/SQL Server** – Contains the files for Microsoft SQL Server for the above tasks.
- **/scClient** – Stores files related to the Accelerate module. When a client is generated for use with Accelerate, it will be put here.
- **/Reports** – Stores files for the Reports tab in EFT, for use with the Auditing and Reporting Module. These are XML files that are used with the VSReport utility to create PDF and HTML output of useful information from the ARM database.
- **/GeneratedReports** – Generated reports are stored here.
- **/Backup** – Automatically created "Backup and Cleanup" rule files are stored here.
- **/AWE** – Stores AWE .aml files. /Temp in this folder is where the AWE logging is saved, by default.

There may be folders created with an EFT version then "Configuration Backup" and the date as their title. (For example, EFT Server Enterprise 7.3.6.17 Configuration Backup 05-08-2017_10_53_10) These folders contain some files that are backed up automatically

What is stored in the EFT configuration directory?

when an upgrade or restore is performed.

GlobalSCAPE Knowledge Base

<https://kb.globalscape.com/Knowledgebase/11378/What-is-stored-in-the-EFT-co...>