

Increase Vault Disk Space with Compression

THE INFORMATION IN THIS ARTICLE APPLIES TO:

- WAFS v4.3 and later

DISCUSSION

In WAFS v4.3 and later, you can configure the Vault to compress the files and folders in the M directory for a Job (e.g., C:\Vault Data\\M) upon startup. Compressing the M directory will provide more space on the Vault drive.

To configure compression, create the following key

32-bit:

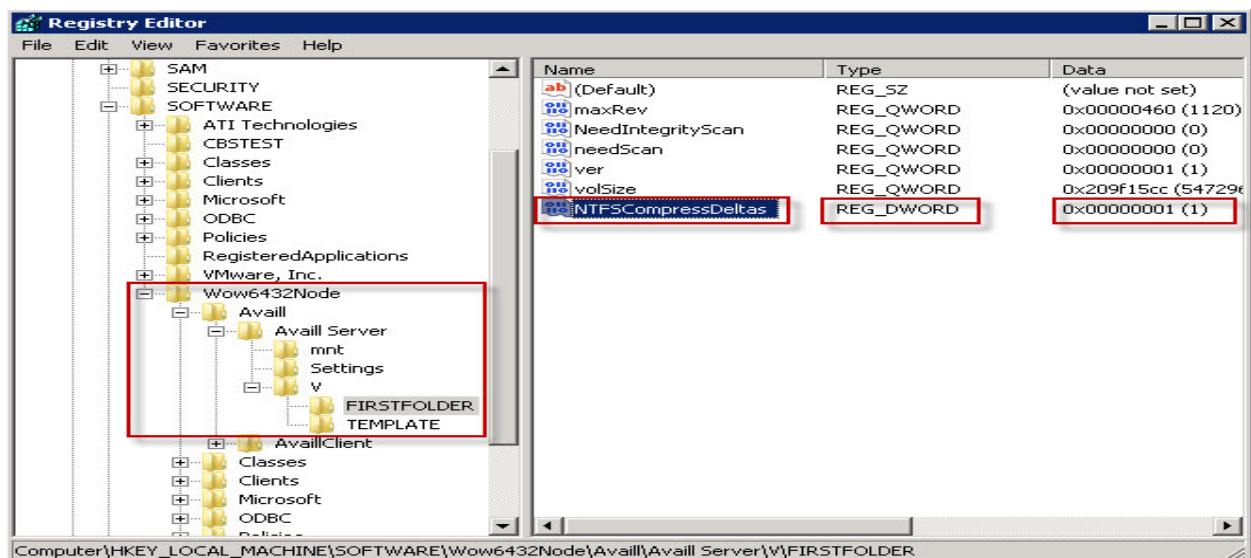
HKEY_LOCAL_MACHINE\SOFTWARE\Avall\Avall Server\V\\

64-bit:

HKEY_LOCAL_MACHINE\SOFTWARE\Wow6432Node\Avall\Avall Server\V\\

DWORD: NTFSCompressDeltas

1=compress files; 0= uncompress files



Increase Vault Disk Space with Compression

In the server log (c:\vault data_Logs\Srv_*.txt) you should see entries similar to the following when compression occurs:

```
11 | 19:59:34.312 | INFO | MAPPING | [P_E] NTFSCompressDeltas false with  
attributes: 0X2010
```

If the directory is already compressed, you will see an additional line:

```
11 | 19:59:34.312 | INFO | MAPPING | [C:\Vault Data\P_E\M\] not changing  
compression
```

If NTFSCompressDeltas is 0 or doesn't exist (and the directory isn't already compressed) you will see this something like:

```
11 | 19:59:34.312 | INFO | MAPPING | [P_E] NTFSCompressDeltas false with  
attributes: 0X2010
```

```
11 | 19:59:34.312 | INFO | MAPPING | [C:\Vault Data\P_E\M\] not changing  
compression
```

GlobalSCAPE Knowledge Base

<https://kb.globalscape.com/Knowledgebase/11164/Increase-Vault-Disk-Space-wi...>