

Cannot connect to EFT when using LDAPv2

THE INFORMATION IN THIS ARTICLE APPLIES TO:

- EFT Server, version 6.x

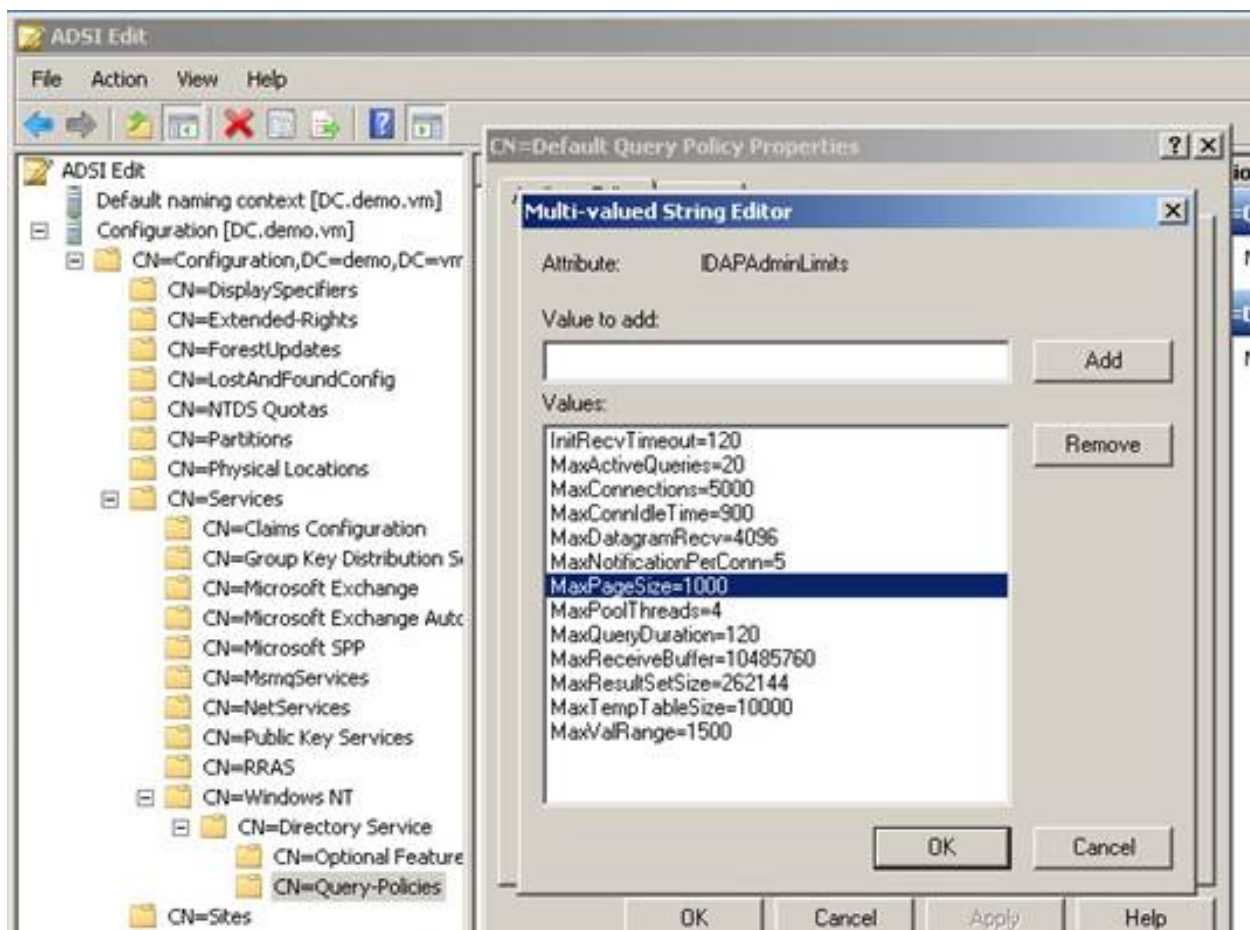
SYMPTOM

Cannot connect to EFT using LDAPv2

RESOLUTION

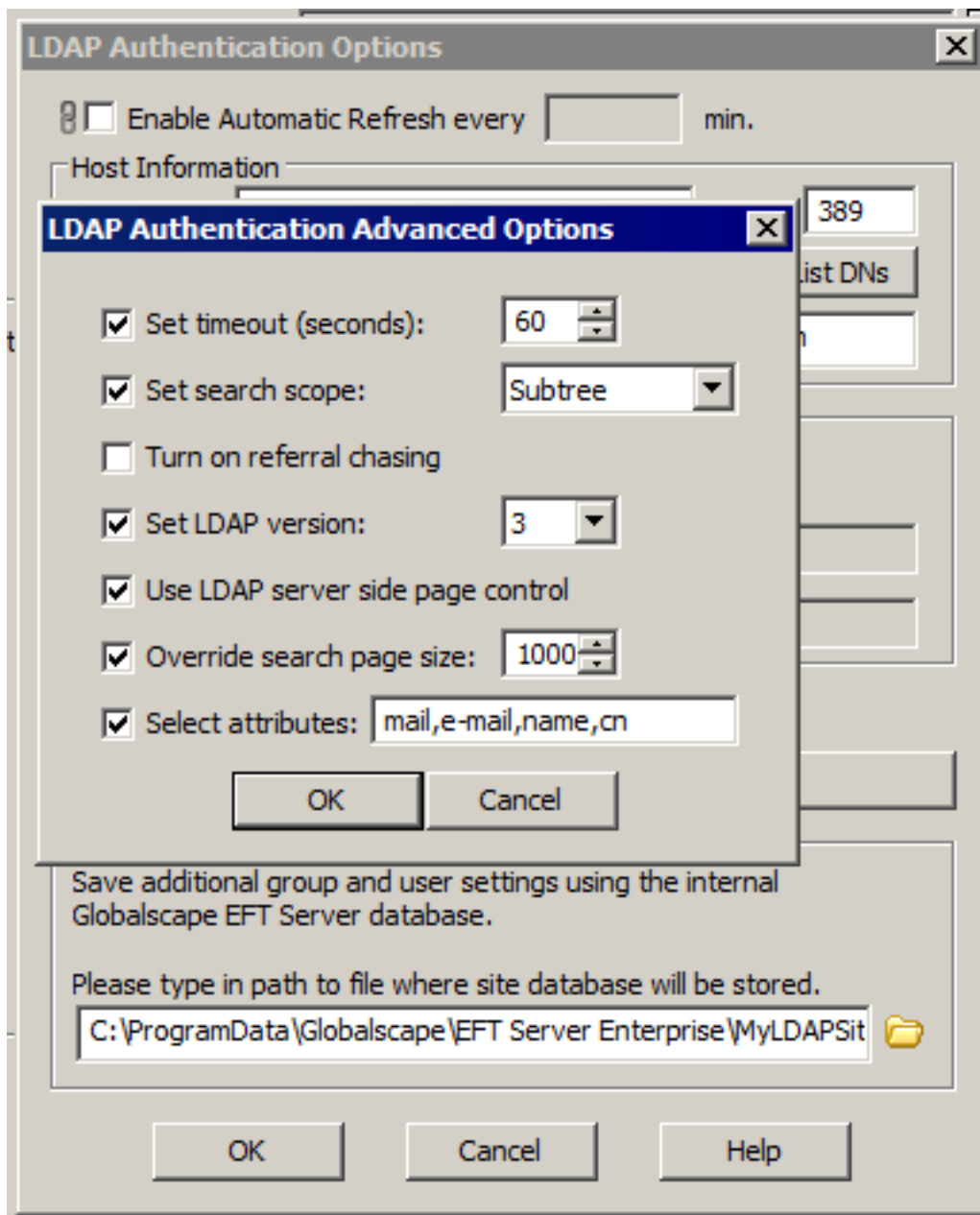
Modify the default `MaxPageSize` in `ADSIEDIT.MSC` or GPO, and the advanced LDAP settings in EFT.

In ADSI EDIT:



Cannot connect to EFT when using LDAPv2

In EFT (on the LDAP Site's **General** tab), edit the **Override search page size** setting:



MORE INFORMATION

If you try to log in using an AD account that doesn't show up in EFT, it denies the authentication. Increasing the search page size allows the accounts to appear.

Cannot connect to EFT when using LDAPv2

From <http://support.microsoft.com/kb/315071>: **MaxPageSize** - This value controls the maximum number of objects that are returned in a single search result, independent of how large each returned object is. To perform a search where the result might exceed this number of objects, the client must specify the paged search control. This is to group the returned results in groups that are no larger than the MaxPageSize value. To summarize, MaxPageSize controls the number of objects that are returned in a single search result. The default value is 1,000.

For more information about MaxPageSize, refer to <http://searchwindowsserver.techtarget.com/tip/Limiting-LDAP-searches-with-MaxPageSize>.

GlobalSCAPE Knowledge Base

<https://kb.globalscape.com/Knowledgebase/11143/Cannot-connect-to-EFT-when-u...>