

Under AD authentication, why does All Users list when creating a conditional event rule to limit groups or users?

THE INFORMATION IN THIS ARTICLE APPLIES TO:

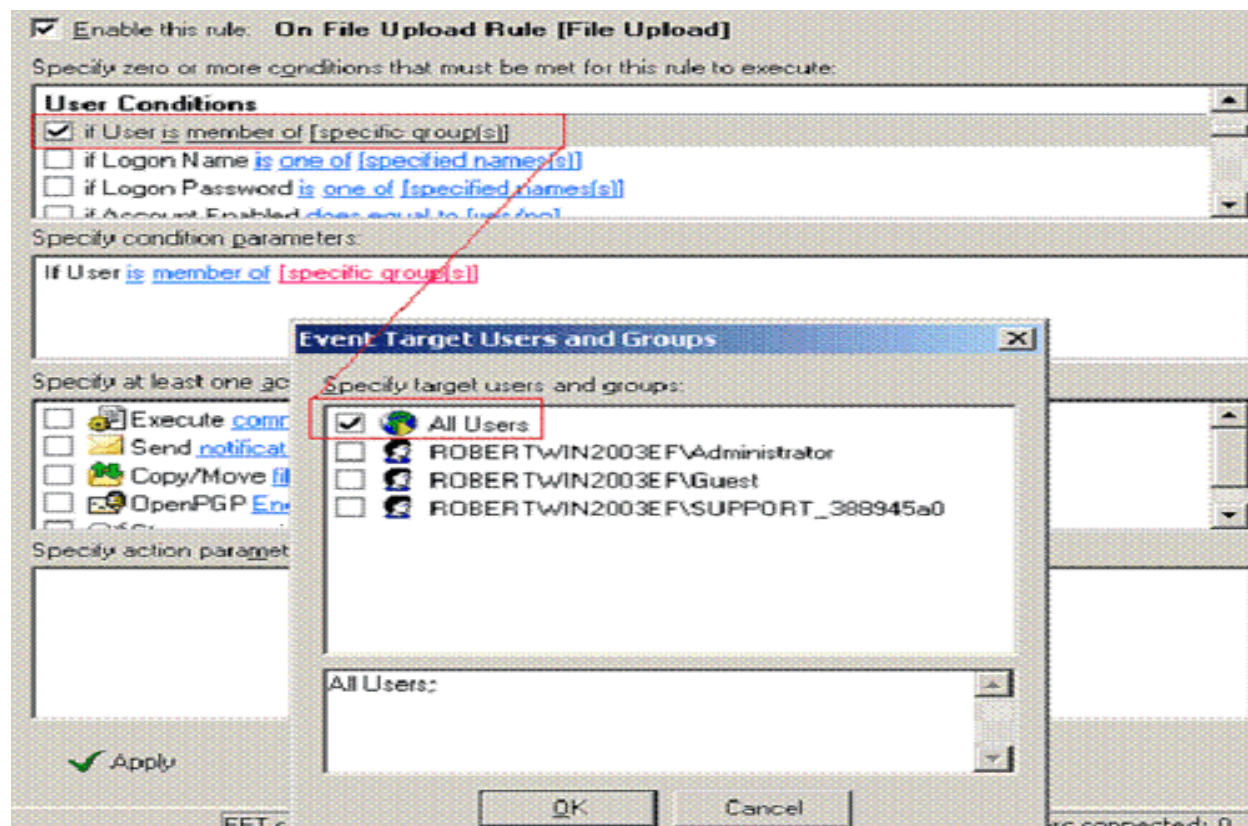
- Secure FTP Server (All Versions)
- EFT Server (All Versions)

QUESTION

Under AD authentication, why does **All Users** appear when creating a conditional Event Rule to limit groups or users? Shouldn't only the list of AD users be displayed?

ANSWER

When using AD, EFT Server does not expose groups to the administration interface; however, a design choice was made to ensure that there is at least one condition that you can define to ALWAYS execute the rule. Therefore it is by design, and poses no harm to the system. You can select to NOT include **ALL Users** and specify individual users by deselecting **All Users** and selecting the individual user accounts that you want to conditionally trigger the rule.



Under AD authentication, why does All Users list when creating a conditional event rule to limit groups or users?

GlobalSCAPE Knowledge Base

<https://kb.globalscape.com/Knowledgebase/10283/Under-AD-authentication-why-...>