

RUNNING EFT IN
MICROSOFT® AZURE

GLOBALSCAPE

GlobalSCAPE, Inc., a HelpSystem company	
	Corporate Headquarters
Address:	4500 Lockhill-Selma Road, Suite 150, San Antonio, TX (USA) 78249
Sales:	(210) 308-8267
Sales (Toll Free):	(800) 290-5054
Technical Support:	(210) 366-3993
Web Support:	http://www.globalscape.com/support/

© 2008-2021 GlobalSCAPE, Inc. All Rights Reserved

January 13, 2021

Table of Contents

- Introduction 4
- What is Microsoft Azure? 4
- How to create the Virtual Machine 4
- Installing EFT on the Virtual Machine 7

INTRODUCTION

This document describes how to create a virtual machine (VM) in the Microsoft Azure Management portal. Note that your image choices depend on your subscription. For example, desktop images may be available to MSDN subscribers.

After creating the Virtual Machine, you can install EFT.

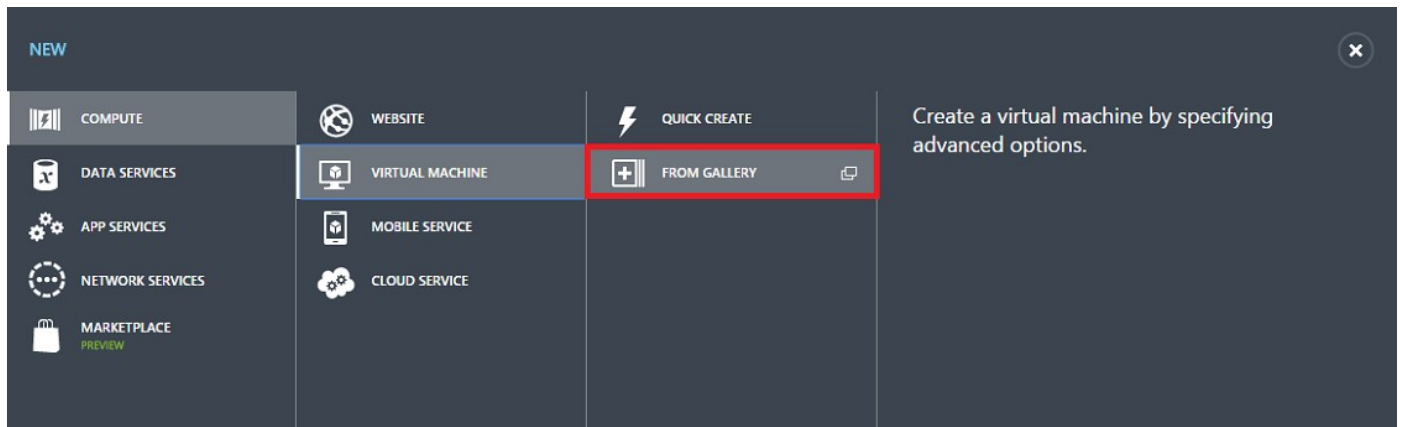
WHAT IS MICROSOFT AZURE?

Azure offers different ways to create a VM, because VMs are designed for different users and purposes. This means you'll need to make some choices about the VM and how you'll create it.

HOW TO CREATE THE VIRTUAL MACHINE

This section shows you how to use the **From Gallery** option in the Azure Management Portal to create the virtual machine. This option provides more configuration choices than the **Quick Create** option. For example, if you want to join a virtual machine to a virtual network, you'll need to use the **From Gallery** option.

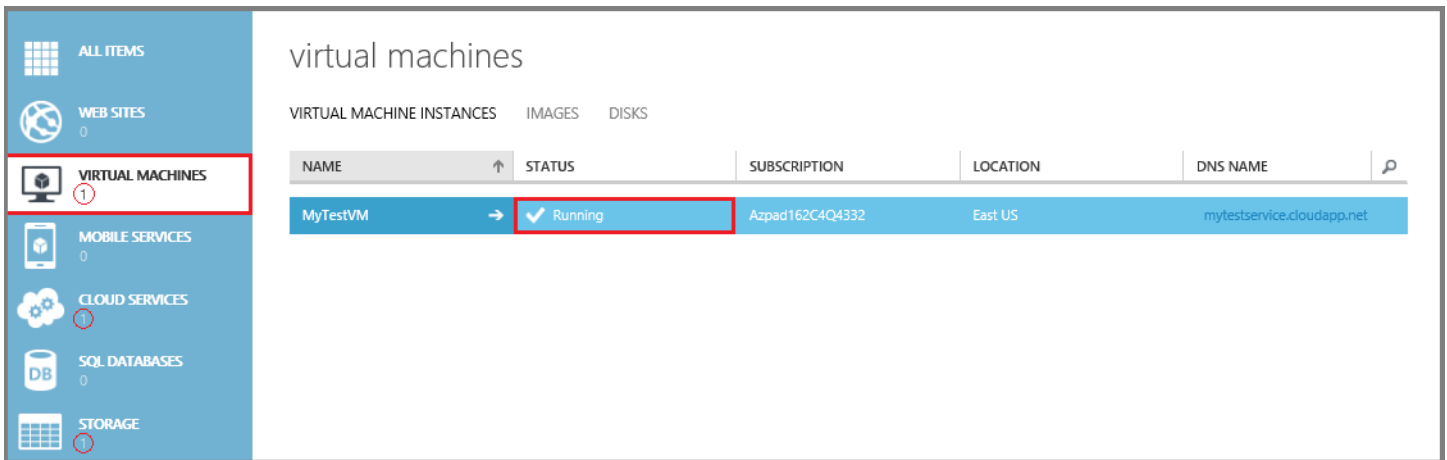
1. Sign in to the Azure Management Portal, either with a Trial, MSDN account, or if you have purchased a full account from Microsoft.
2. On the command bar at the bottom of the window, click **New**.



3. Under **Compute**, click **Virtual Machine**, and then click **From Gallery**.
4. The first screen after this lets you choose an Image for your virtual machine from the list of available images. (The available images may differ depending on the subscription you're using or you can upload custom images for your specific company. i.e. golden images approved for production use.)
5. The second screen lets you specify the computer name, size, and administrative user name and password. Use the tier and size required to run your app or workload. Here are some more details to help you fill this out:
 - New User Name refers to the administrative account that you use to manage the server. Create a unique password for this account and make sure to remember it. You'll need the user name and password to log on to the virtual machine.

- A virtual machine's size affects the cost of using it, as well as configuration options such as the number of data disks you can attach. For details, see *Sizes for Virtual Machines* and *Sizes for Cloud Services* in Azure.
6. The third screen lets you configure resources for networking, storage, and availability. Here are some details to help you fill this out:
 - The **Cloud Service DNS Name** is the global DNS name that becomes part of the URI that's used to contact the virtual machine. You'll need to come up with your own cloud service name because it must be unique in Azure. Cloud services are important for scenarios using multiple virtual machines. For example: ftp.domain.com
 - For **Region/Affinity Group/Virtual Network**, use a region that's appropriate to your location. You can also choose to specify a virtual network instead. Very help if you will be creating a DMZ server in front of the EFT server system.

Note: If you want a virtual machine to use a virtual network, you must specify the virtual network when you create the virtual machine. You can't join the virtual machine to a virtual network after you create the VM.
 7. The fourth configuration screen lets you install the VM Agent and configure some of the available extensions. ****Very important to make things work properly.**
 8. After the virtual machine is created, the Management Portal lists the new virtual machine under **Virtual Machines**. The corresponding cloud service and storage account also are created and are listed in those sections. Both the virtual machine and cloud service are started automatically and their status is listed as **Running**.



9. Log on to the virtual machine.
10. Attach a disk to store data. You can attach both empty disks and disks that contain data.

11. Configure End Points for users to reach the new Virtual Server

[DASHBOARD](#) [MONITOR](#) **ENDPOINTS** [CONFIGURE](#)

NAME	↑	PROTOCOL	PUBLIC PORT	PRIVATE PORT	LOAD-BALANCED SET NA...	🔍
HTTPS		TCP	443	443	-	
PowerShell		TCP	5986	5986	-	
Remote Desktop		TCP	61269	3389	-	
SSH		TCP	22	22	-	

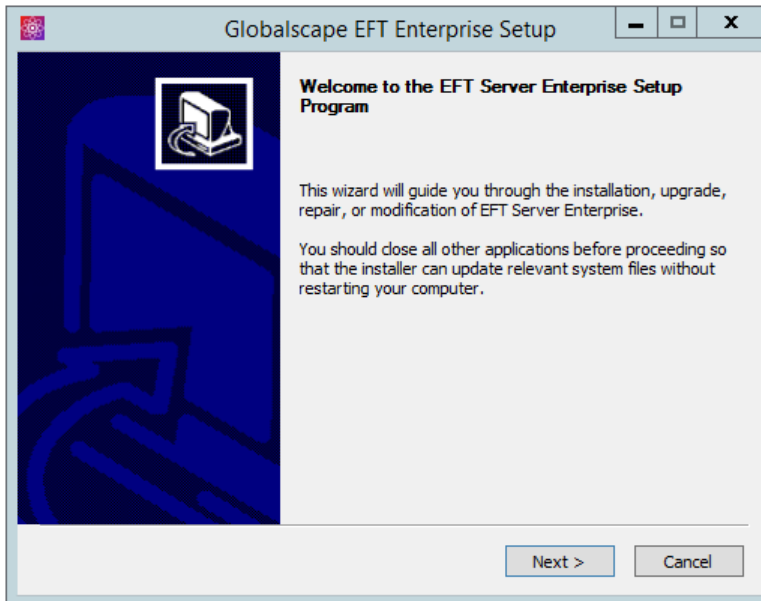
12. Use the menu option at the bottom of the page to either edit existing End Points or perhaps create new ones



INSTALLING EFT ON THE VIRTUAL MACHINE

To install EFT, administration interface, and all modules except for DMZ Gateway

1. Close all unnecessary applications so that the installer can update system files without rebooting the computer.
2. Start the installer, and then click **Next**. The Welcome page appears.

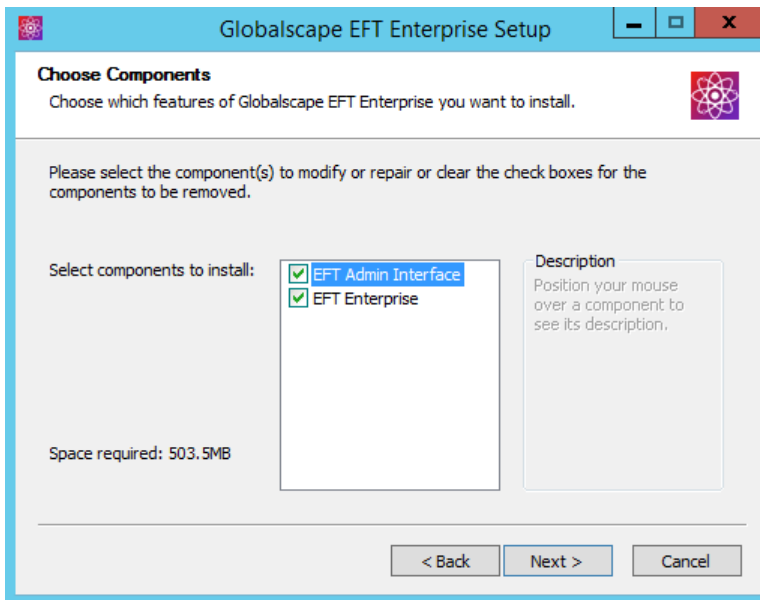


3. Read the **Welcome** page, and then click **Next**. The **License Agreement** page appears.

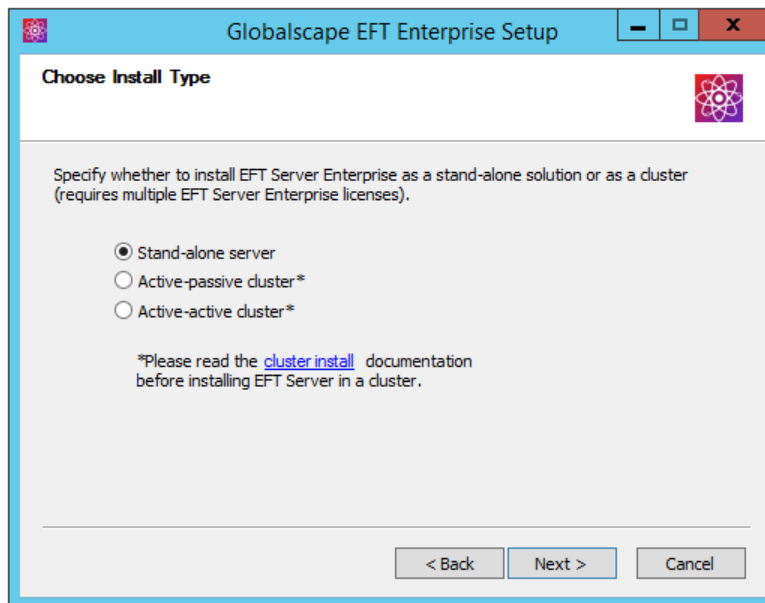


4. Read the license agreement, and then click **I agree** to accept it. Clicking **Cancel** aborts the installation.
5. If you are upgrading or reinstalling, the version detected page appears. Refer to [Upgrading the Software](#) for the procedure.

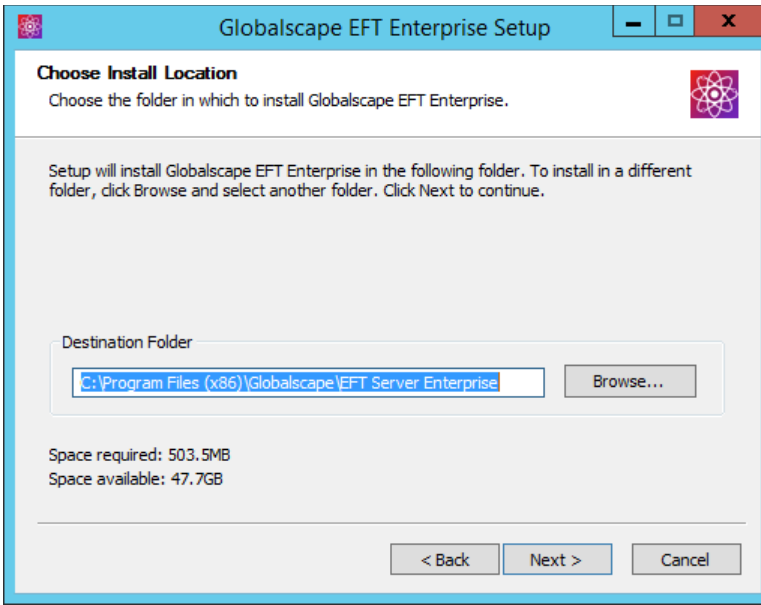
- The **Choose Components** page appears.



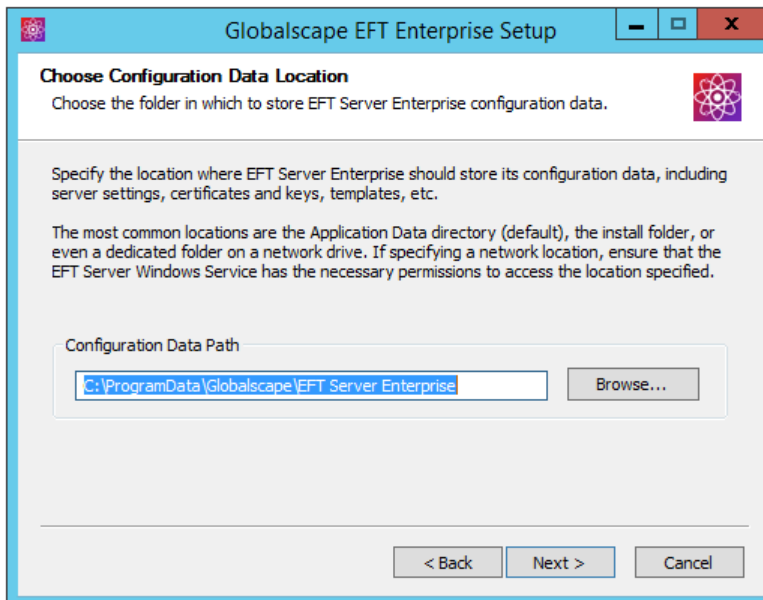
- When you install EFT, the **EFT administrator Interface** check box must also be selected. After you have installed EFT and the administration interface on one computer, you can install the administration interface on other computers for remote administration.
- Click **Next**. The **Installation type** page appears.



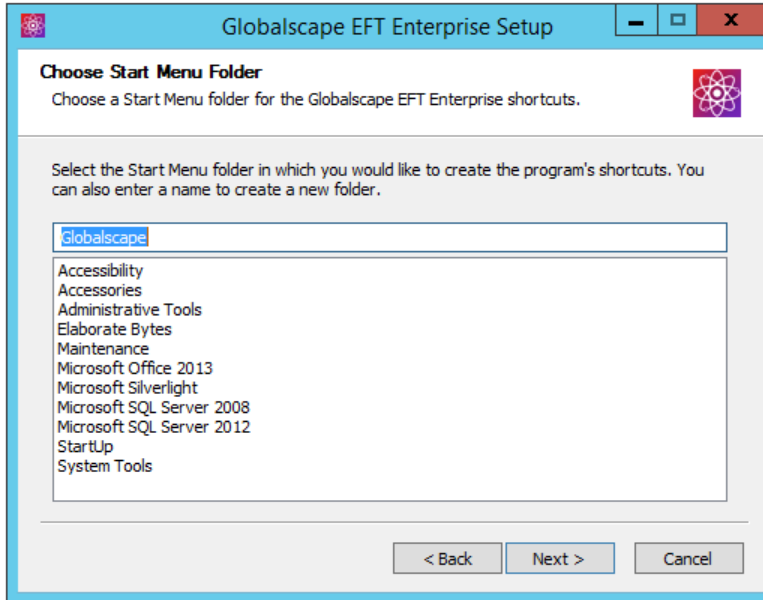
- Single server is the default installation type. Specify the installation type, and then click **Next**. The **Choose Install Location** page appears.



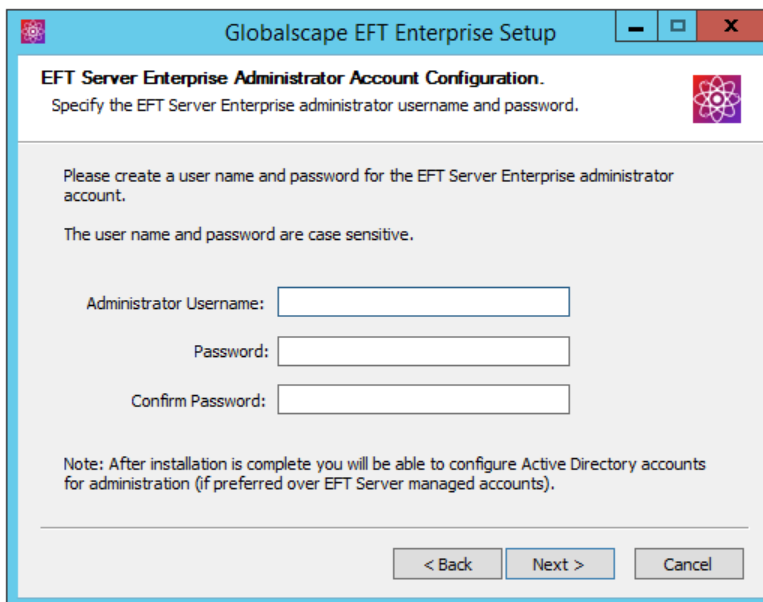
10. The default installation location appears in the **Destination Folder** box. Leave the default or click **Browse** to specify a different folder, and then click **Next**. The **Configuration Data Location** page appears. (The installer does not support Unicode characters in the path.)



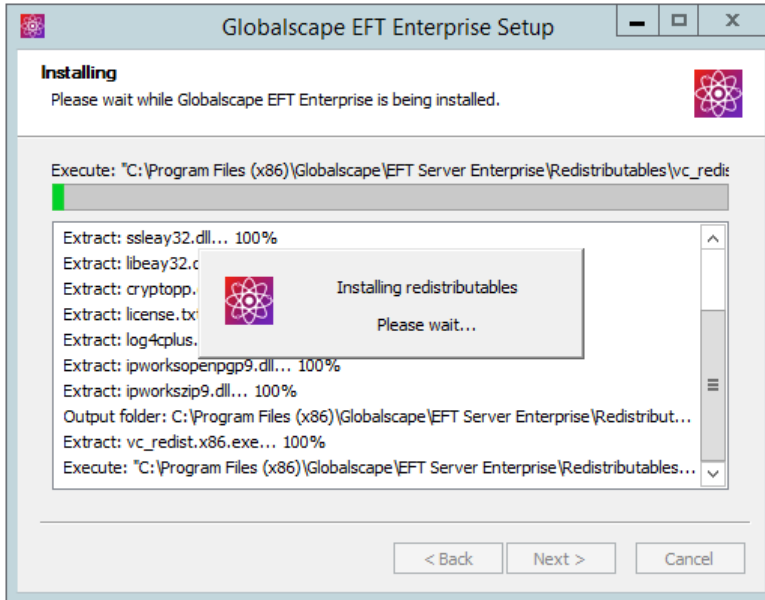
11. Specify where you want to save EFT's configuration settings. The EFT service must have permission to access the specified path. The default location is **%systemroot%\ProgramData**. The installer does not support Unicode characters in the path.
12. Click **Next**. The **Choose Start Menu Folder** page appears.



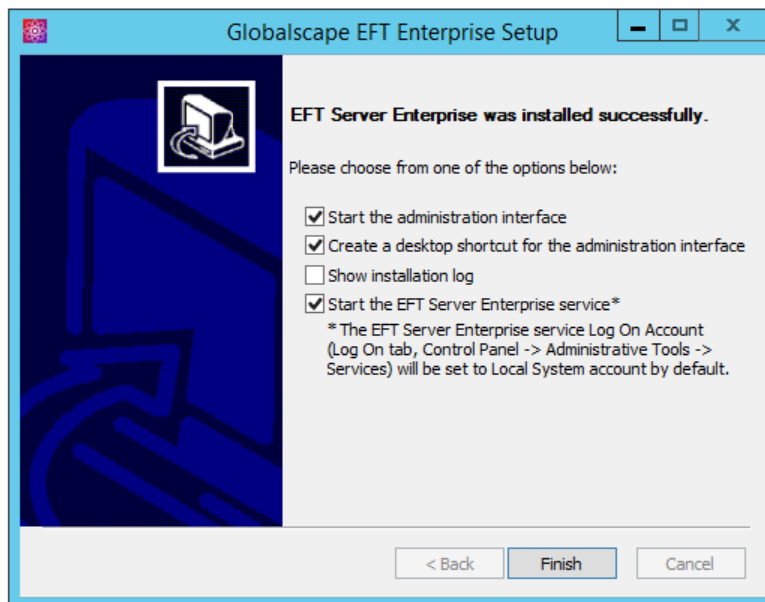
13. Keep the default shortcuts, specify an existing folder, or type a name for a new folder.
14. Click **Next**. The **Administrator Account Configuration** page appears.



15. Create a user name and password for the administrator account for connecting to EFT from the administration interface. Both the username and password are case sensitive. The installer does not support Unicode characters in the username or password.
16. Click **Next**. The ARM selection page appears. Click **Skip Auding and Reporting configuration**, then click **Next**.
17. The installer installs the options that you've selected, then the **Installation Complete** page appears.



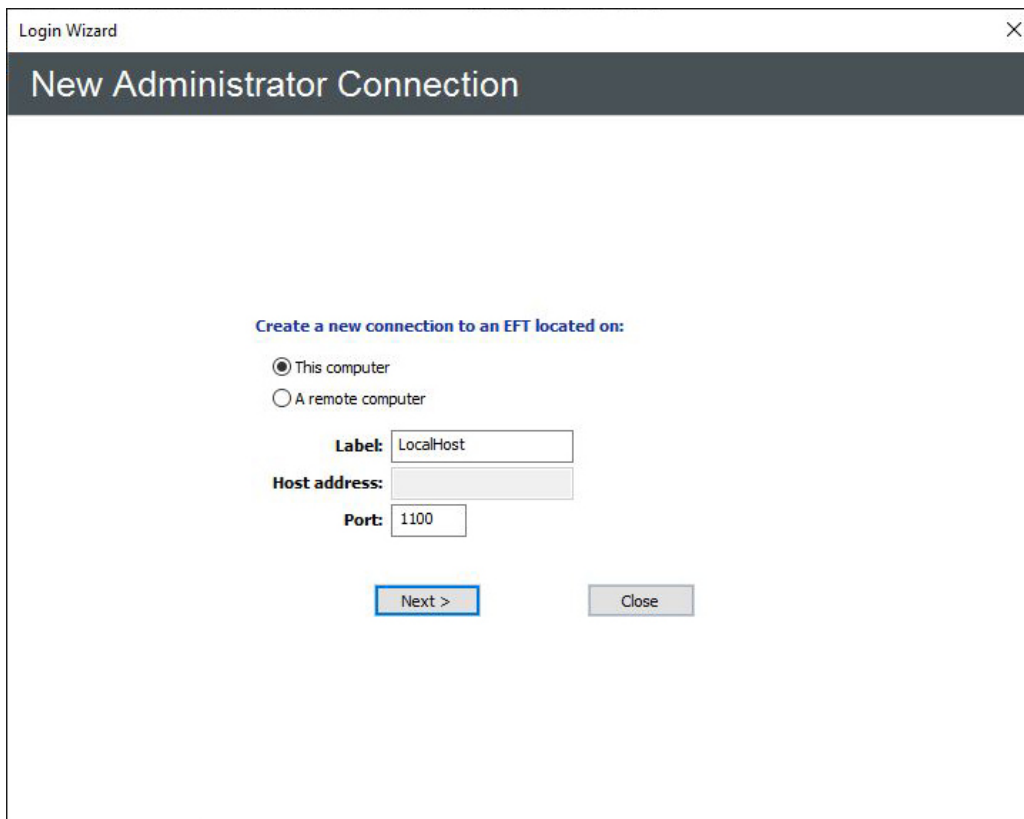
18. Click **Next**. A page appears allowing you to start EFT, create a shortcut to the administration interface on the desktop, open the administration interface, and/or view the EFT version history.



- **Start the administration interface** - If you do not want to open the interface, clear the check box. You can also open the interface from the **Start** menu.
- **Create a desktop shortcut** - An administration interface shortcut is created on the desktop by default. If you do not want to create a shortcut, clear the check box.
- **Show version history** - If you want to read the release notes, select the **Show Version History** check box. If you want to read it later, the file, **notes.txt**, is stored in the EFT installation directory.

- **Show installation log** - If you want to review the installation log now, select the check box. If you want to review it later, it is stored in a temporary folder, **C:\Program Files\GlobalSCAPE\EFT Enterprise (or EFT Server)\Installer.log**.
- **Start the EFT Server Enterprise Service** - Clear the check box if you do not want to start the Service yet. Select the check box if you want to start the service when you click **Finish**. The service is configured to start automatically when the computer starts. If you do not want the service to start automatically, you will have to configure it in Windows to start manually. The EFT service Log On Account is set to "Local System account."

19. Click **Finish**. If the administration interface check box was selected and the EFT service was started, the **Login Wizard** appears.



20. With **This computer** selected, click **Next**. (You must create a local connection first. Then later you can create remote connections, if you want.) The **EFT Server Administrator Login** page appears.

Login Wizard

EFT Administrator Login

Connect to EFT located on:

This computer

A remote computer:

EFT administrator credentials:

Authentication:

Username:

Password:

21. Click in the **Authentication** box and click **EFT Authentication**. This will be the only option available until the application is setup and registered for other authentications.
22. In the **Username** and **Password** boxes, provide the login credentials that you created during installation, and then click **Connect**. The **Welcome** page appears. Since you have not yet activated the software, the "Free Trial" reminders appear. After you activate, you will not see the reminder prompt.
23. For more details instructions for installing and configuring EFT, refer to the help contents for the version you are installing.