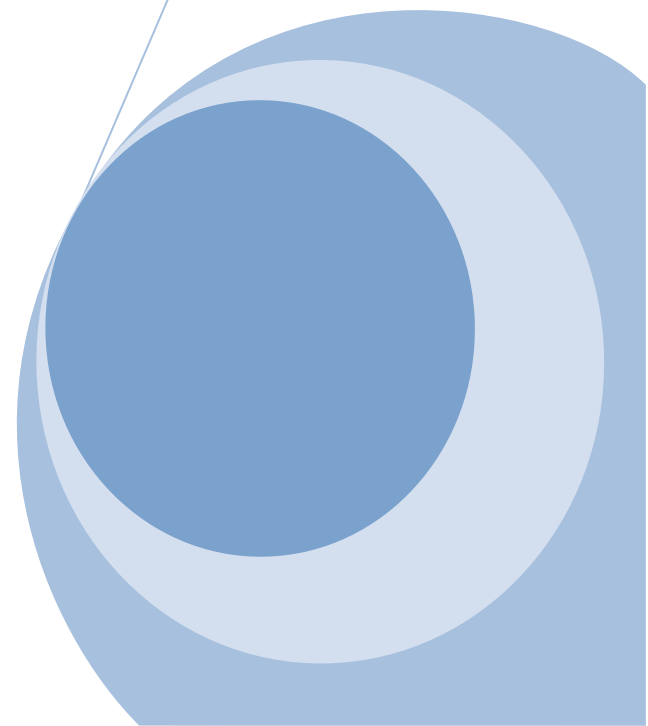
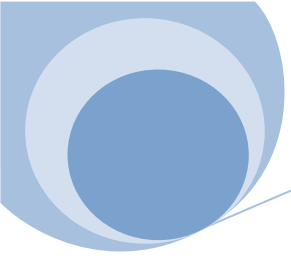


## **EFT running on Azure in the cloud**





## Contents

Introduction .....	3
What is Microsoft Azure?.....	3
How to create the Virtual Machine .....	3
Installing EFT on the new Virtual Machine .....	6

## Introduction

This tutorial shows you how easy it is to create an Azure virtual machine (VM) in the Azure Management portal. We'll use a Windows Server image as an example, but that's just one of the many images Azure offers. Note that your image choices depend on your subscription. For example, desktop images may be available to MSDN subscribers.

The following steps will walk through the process of creating a quick and easy EFT system on Microsoft Azure

Let's Begin!

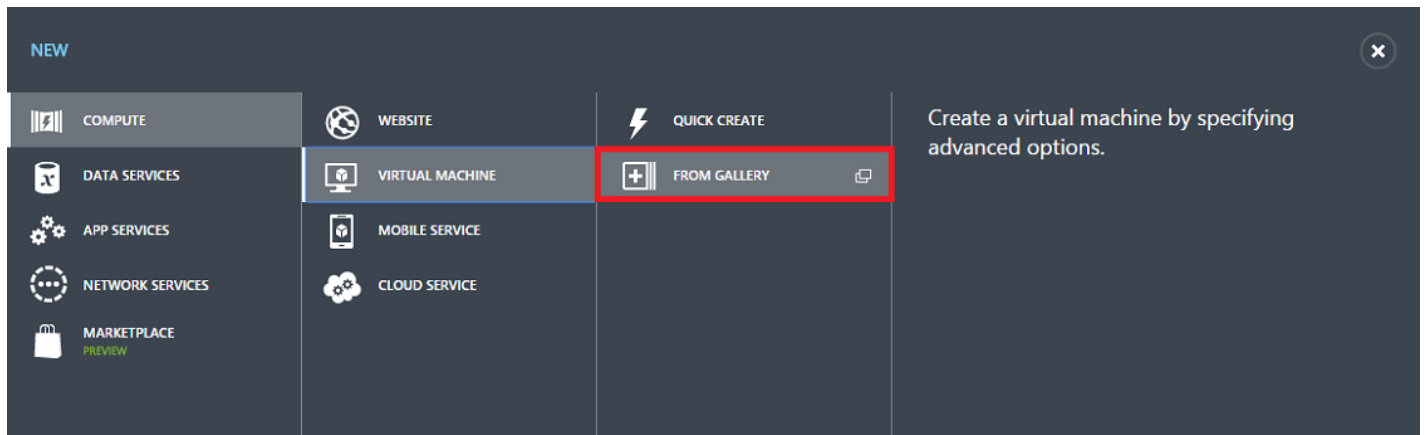
## What is Microsoft Azure?

Azure offers different ways to create a VM because VMs are suited for different users and purposes. This means you'll need to make some choices about the VM and how you'll create it.

## How to create the Virtual Machine


This section shows you how to use the **From Gallery** option in the Azure Management Portal to create the virtual machine. This option provides more configuration choices than the **Quick Create** option. For example, if you want to join a virtual machine to a virtual network, you'll need to use the **From Gallery** option.

1. Sign in to the Azure Management Portal.
  - Either with a Trial, MSDN account, or if you have purchased a full account from Microsoft.
2. On the command bar at the bottom of the window, click **New**.
3. Under **Compute**, click **Virtual Machine**, and then click **From Gallery**.

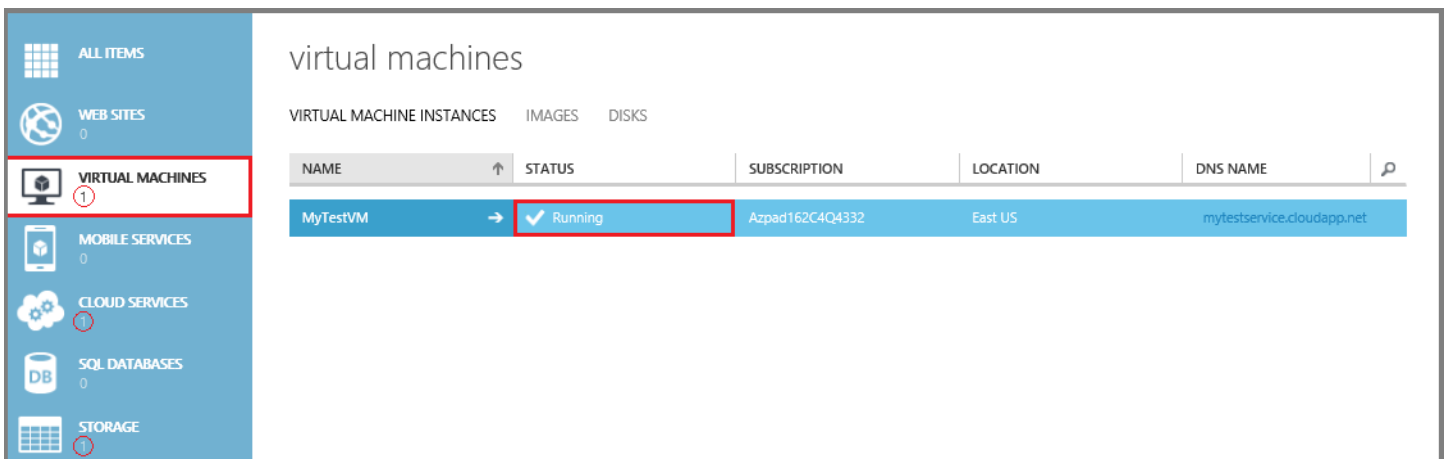


4. The first screen after this lets you **choose an image** for your virtual machine from the list of available images. (The available images may differ depending on the subscription you're using or you can upload custom images for your specific company. i.e. golden images approved for production use.)
5. The second screen lets you pick a computer name, size, and administrative user name and password. Use the tier and size required to run your app or workload. Here are some more details to help you fill this out:

- **New User Name** refers to the administrative account that you use to manage the server. Create a unique password for this account and make sure to remember it. **You'll need the user name and password to log on to the virtual machine.**
  - A virtual machine's size affects the cost of using it, as well as configuration options such as the number of data disks you can attach. For details, see [Sizes for Virtual Machines](#) and [Sizes for Cloud Services](#) in Azure.
6. The third screen lets you configure resources for networking, storage, and availability. Here are some details to help you fill this out:
- The **Cloud Service DNS Name** is the global DNS name that becomes part of the URI that's used to contact the virtual machine. You'll need to come up with your own cloud service name because it must be unique in Azure. Cloud services are important for scenarios using multiple virtual machines.
    - For example ftp.domain.com
  - For **Region/Affinity Group/Virtual Network**, use a region that's appropriate to your location. You can also choose to specify a virtual network instead. Very help if you will be creating a DMZ server in front of the EFT server system.

 Note: If you want a virtual machine to use a virtual network, you **must** specify the virtual network when you create the virtual machine. You can't join the virtual machine to a virtual network after you create the VM.

7. The fourth configuration screen lets you install the VM Agent and configure some of the available extensions. **\*\*Very important to make things work properly.**
8. After the virtual machine is created, the Management Portal lists the new virtual machine under **Virtual Machines**. The corresponding cloud service and storage account also are created and are listed in those sections. Both the virtual machine and cloud service are started automatically and their status is listed as **Running**.



NAME	STATUS	SUBSCRIPTION	LOCATION	DNS NAME
MyTestVM	Running	Azpad162C4C4332	East US	mytestservice.cloudapp.net

9. Log on to the virtual machine.

10. Attach a disk to store data. You can attach both empty disks and disks that contain data.

11. Configure End Points for users to reach the new Virtual Server

DASHBOARD MONITOR **ENDPOINTS** CONFIGURE

NAME	PROTOCOL	PUBLIC PORT	PRIVATE PORT	LOAD-BALANCED SET NA...
HTTPS	TCP	443	443	-
PowerShell	TCP	5986	5986	-
Remote Desktop	TCP	61269	3389	-
SSH	TCP	22	22	-

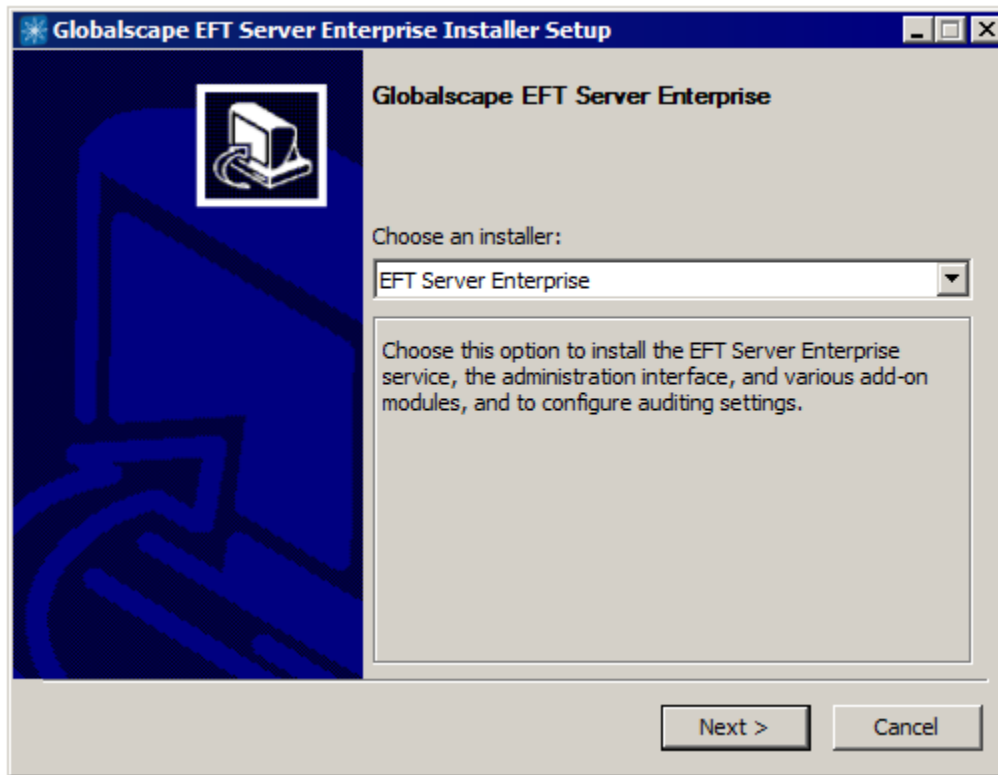
12. Use the menu option at the bottom of the page to either edit existing End Points or perhaps create new ones



## Installing EFT on the new Virtual Machine

To install EFT, administration interface, and all modules except for Mail Express, DMZ Gateway and Secure Ad Hoc Transfer:

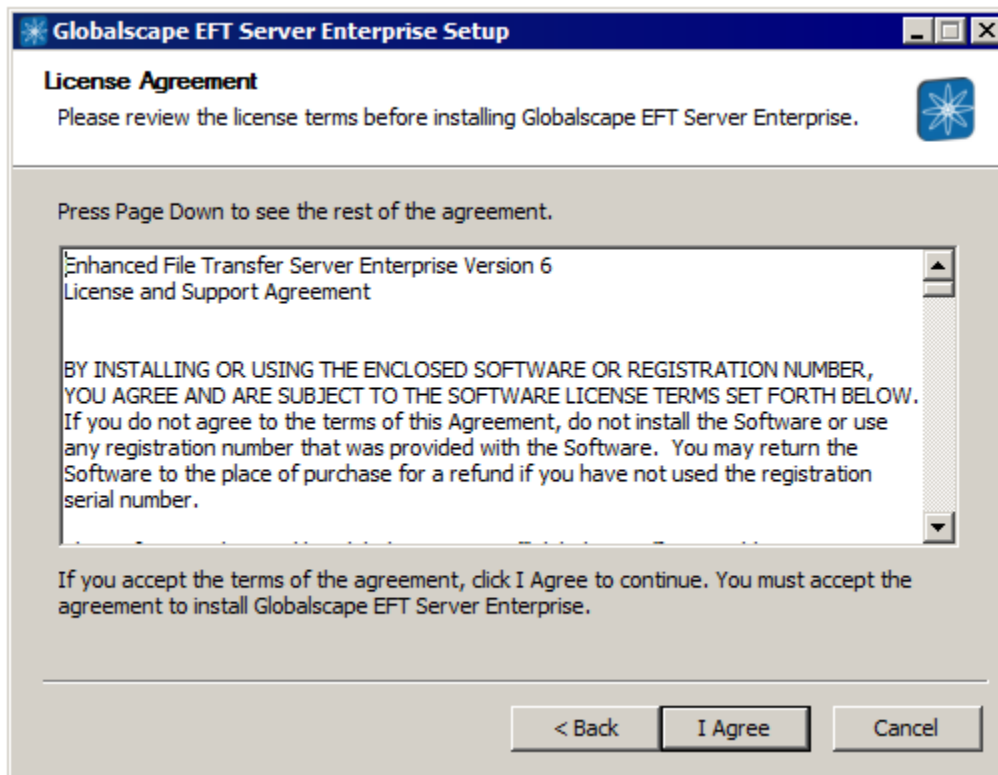
1. Close all unnecessary applications so that the installer can update system files without rebooting the computer.
2. Start the installer, and then click **Next**. The **Choose an installer** page appears. (Illustrations below show EFT Enterprise installation; the procedure is the same for EFT (SMB) edition.)



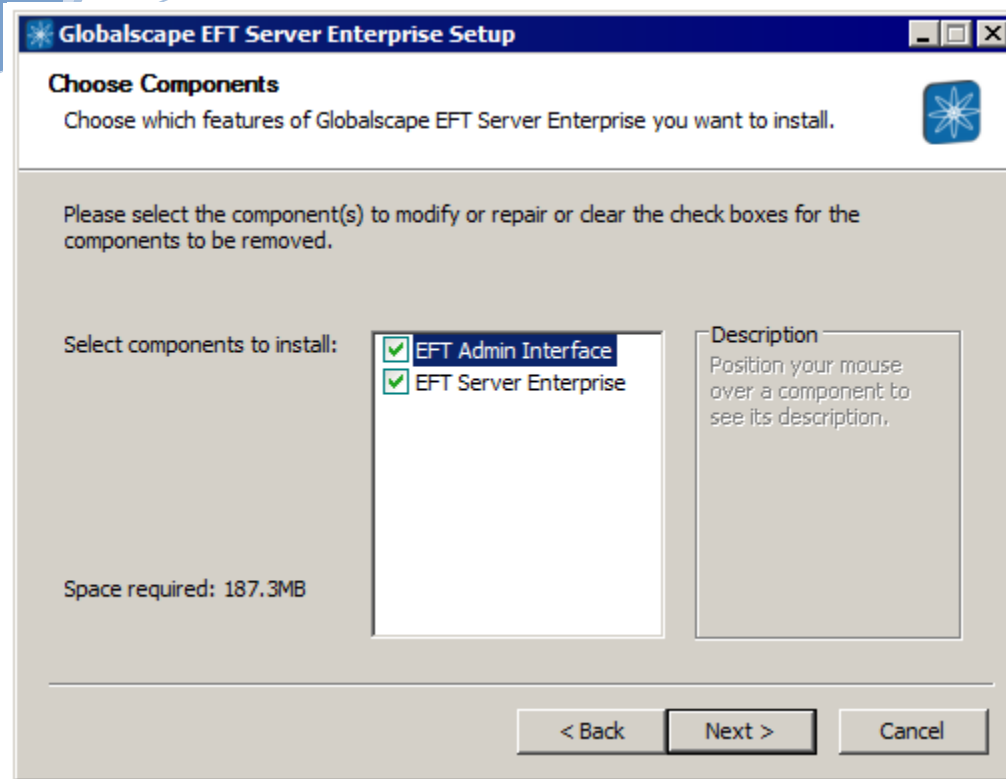
3. Click the list and then, **Globalscape EFT Enterprise**.
4. Click **Next**. The installer will verify the prerequisites.
  - If the prerequisites are not installed, the setup wizard will ask to cancel so that you can install the prerequisites. For example, if you are missing the correct version of .NET Framework and have Internet access, you are redirected to the .NET download page after you click **Cancel**.
5. Click **Next**. After installation components are loaded, the **Welcome** page appears.



6. Read the **Welcome** page, and then click **Next**. The **License Agreement** page appears.

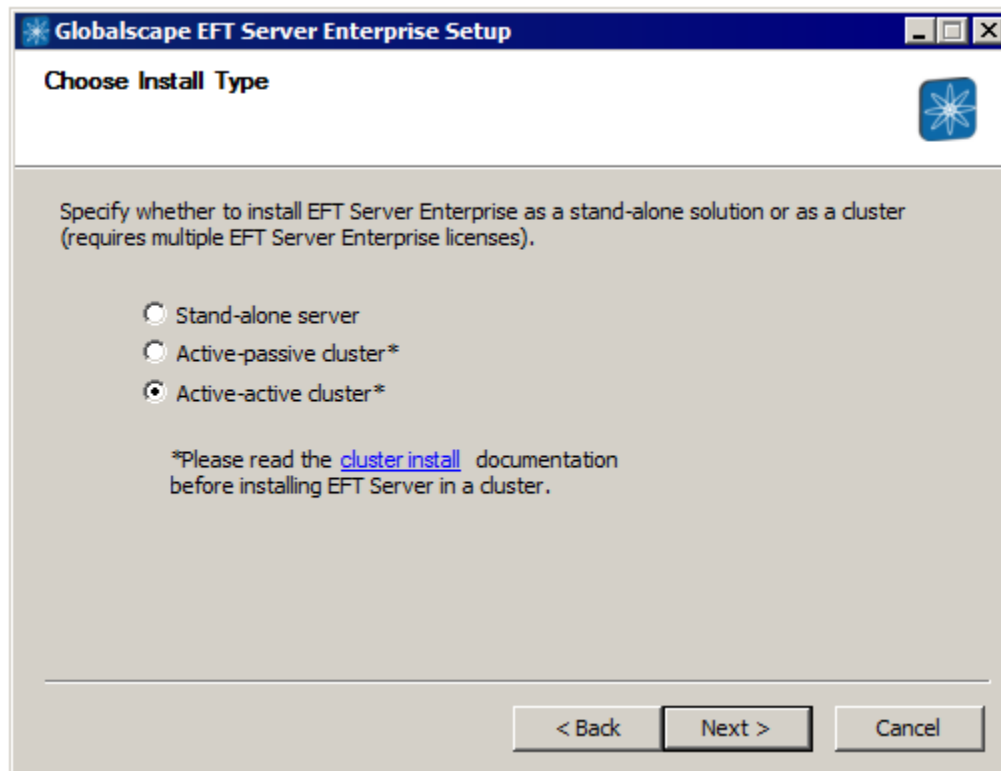


7. Read the license agreement, and then click **I agree** to accept it. The license agreement is also saved in the EFT installation folder as "license.txt" if you want to read or print it later. Clicking **Cancel** aborts the installation. The **Choose Components** page appears.



When you install EFT, the **EFT Admin Interface** check box must also be selected. After you have installed EFT and the administration interface on one computer, you can install the administration interface on other computers for remote administration.

8. Click **Next**. The **Installation type** page appears.

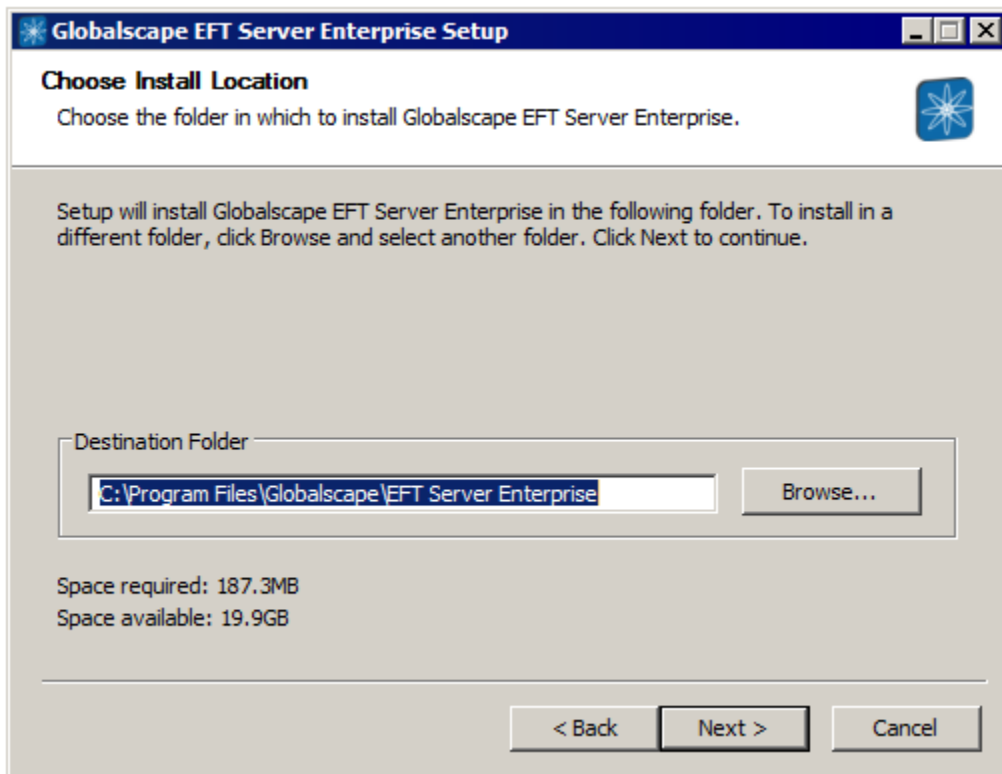


9. Specify the installation type, and then click **Next**.

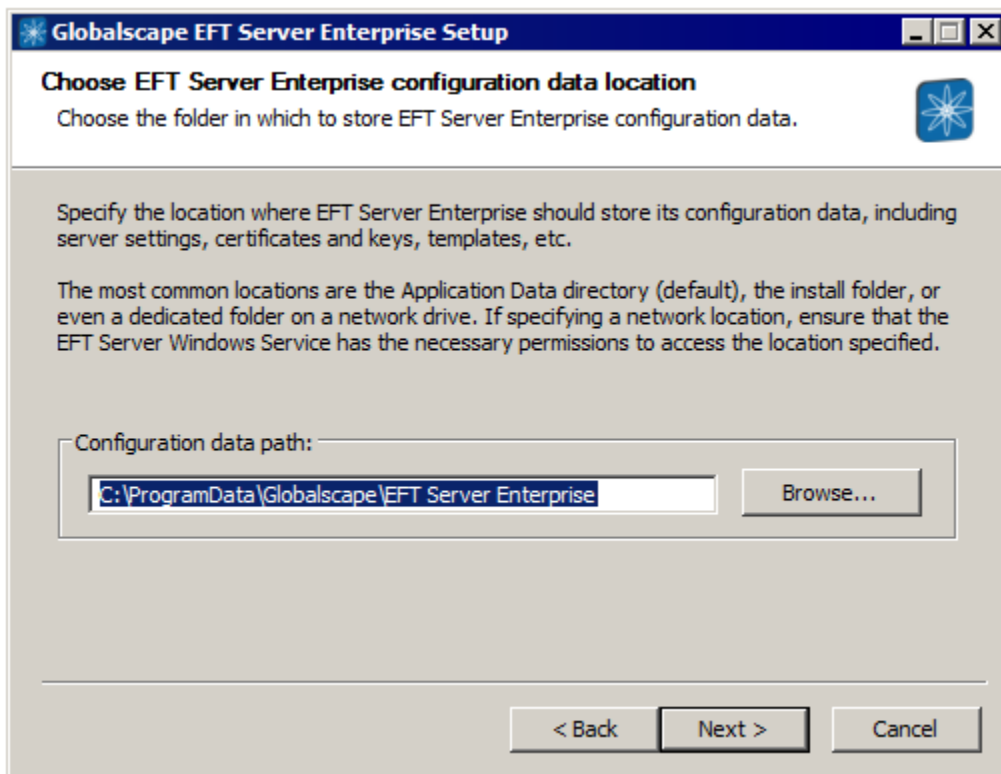


- Single server is the default installation type for this document at this time.

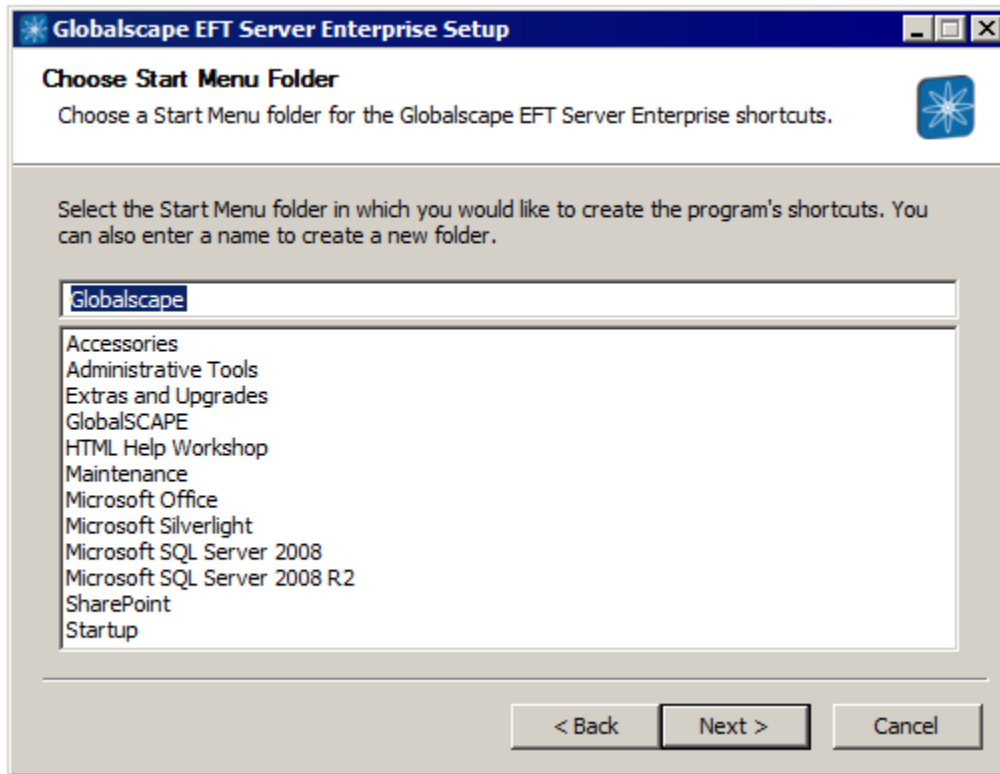
The **Choose Install Location** page appears.



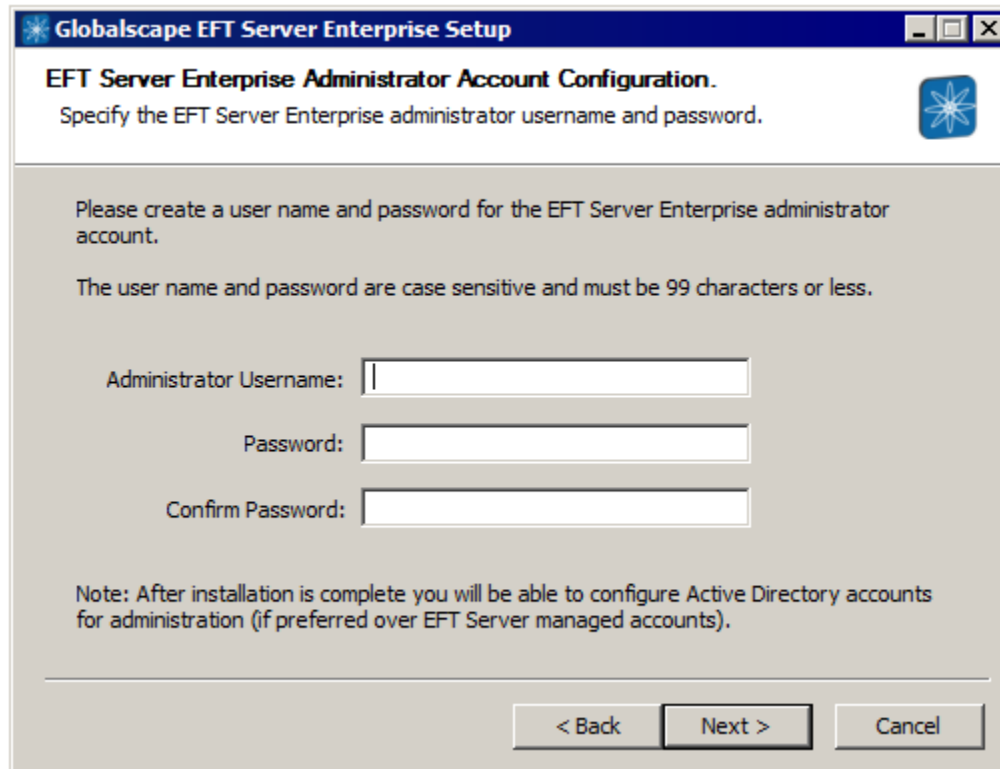
10. The default installation location appears in the **Destination Folder** box. Leave the default or click **Browse** to specify a different folder, and then click **Next**. The **Configuration File Location** page appears.



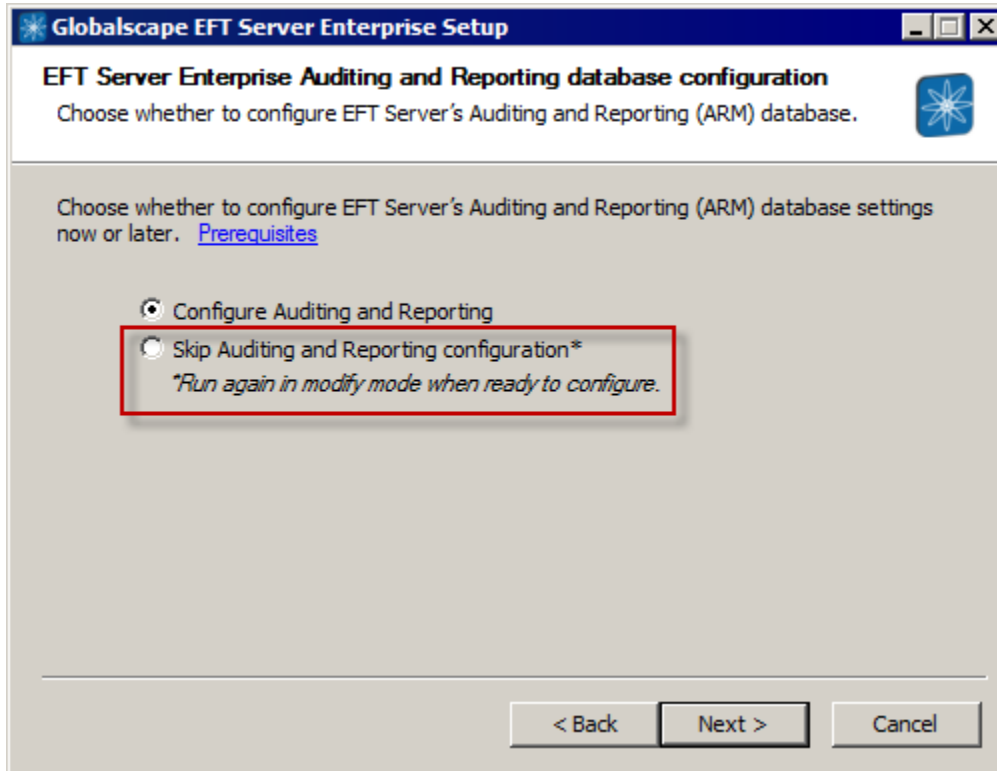
11. Specify where you want to save EFT's configuration settings.
12. Click **Next**. The **Choose Start Menu Folder** page appears.



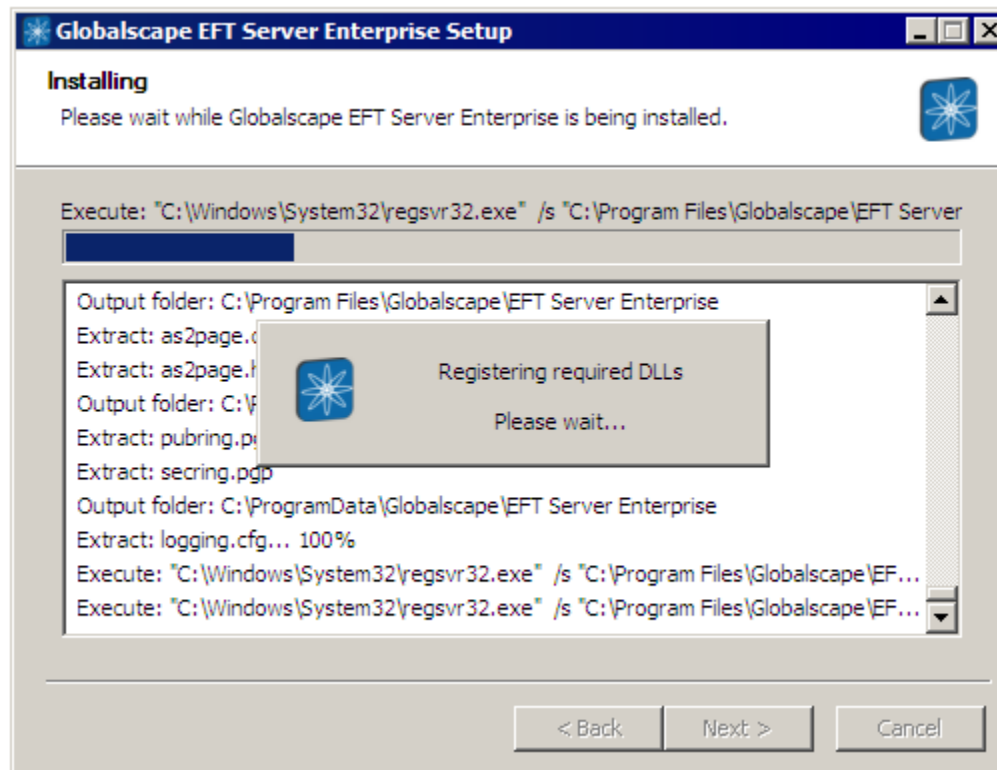
13. Keep the default shortcuts, specify an existing folder, or type a name for a new folder.
14. Click **Next**. The **Administrator Account Configuration** page appears.



15. Create a user name and password for the administrator account for connecting to EFT from the administration interface. Both the username and password are case sensitive.
16. Click **Next**. The ARM selection page appears.



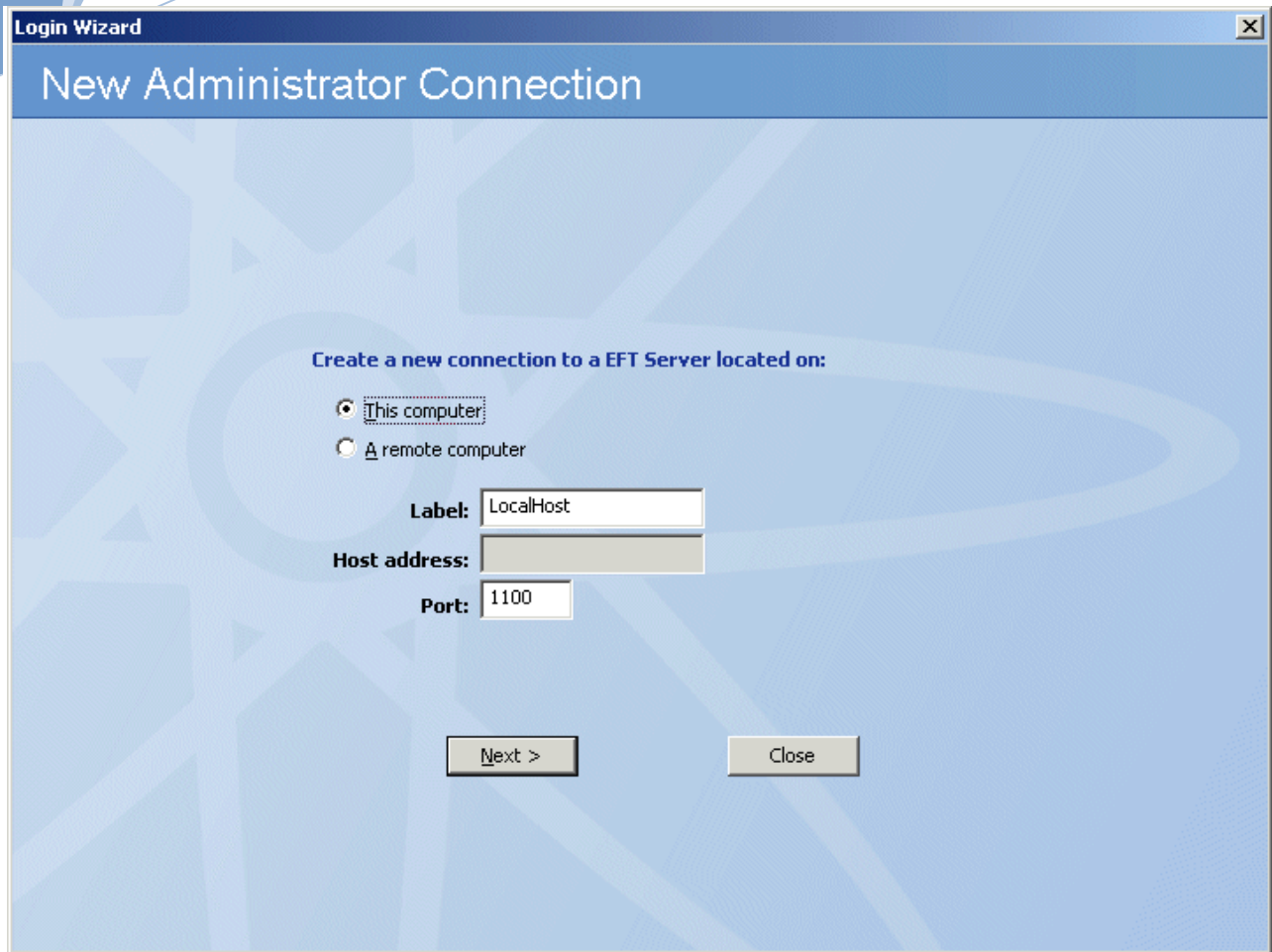
17. Click **SKIP** Auditing and Reporting configuration



18. Click **Next**. A page appears allowing you to start EFT, create a shortcut to the administration interface on the desktop, open the administration interface, and/or view the EFT version history.



19. Click **Finish**. If the administration interface check box was selected and the EFT service was started, the **Login Wizard** appears.



20. With **This computer** selected, click **Next**. (You must create a local connection first. Then later you can create remote connections, if you want.) The **EFT Server Administrator Login** page appears.

**Login Wizard**

## EFT Server Administrator Login

**Connect to EFT Server located on:**

This computer  
 A remote computer

**EFT Server administrator credentials:**

**Authentication:** EFT Server Authentication  
**Username:**  
**Password:**

Connect Close

21. Click in the **Authentication** box and specify the type of authentication to use for this login. Future connections will default to the authentication type that you specify during this initial login, but you can choose a different type. Authentication types include:
  - **EFT Authentication** – This will be the only option available to you until the application is setup and registered for other authentications.
22. In the **Username** and **Password** boxes, provide the login credentials that you created during installation, and then click **Connect**. The **Welcome** page appears. Since you have not yet activated the software, the "Free Trial" reminders appear. After you activate, you will not see the reminder prompt. The software will run for 30 days in Trial.

**\*\*For a complete set of instructions to install EFT, please review the following link:**  
<http://help.globalscape.com/help/eft7-1/mergedprojects/eft/installingserveradministratormodules.htm>